

Katalog części i elementów maszyn ŁAŃCUCHY

A3 - 11 **łańcuch - seria B**

A12 **łańcuch - seria A**

A13 **łańcuch - seria A-B**

A14 **łańcuch - G1-G2**

A15 - 27 **łańcuch -**

A28 **łańcuch - seria AL**

A29 - 30 **łańcuch - seria BL**

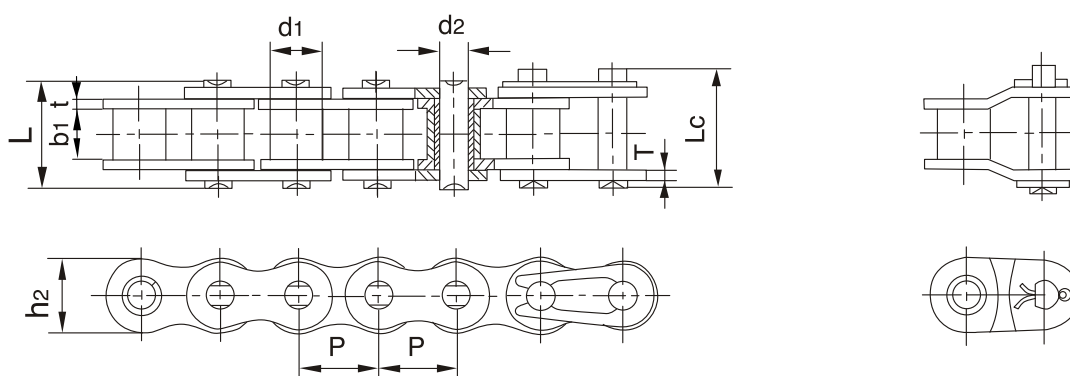
A31 - 32 **łańcuch - seria LL**

A33 - 34 **łańcuch - seria M**

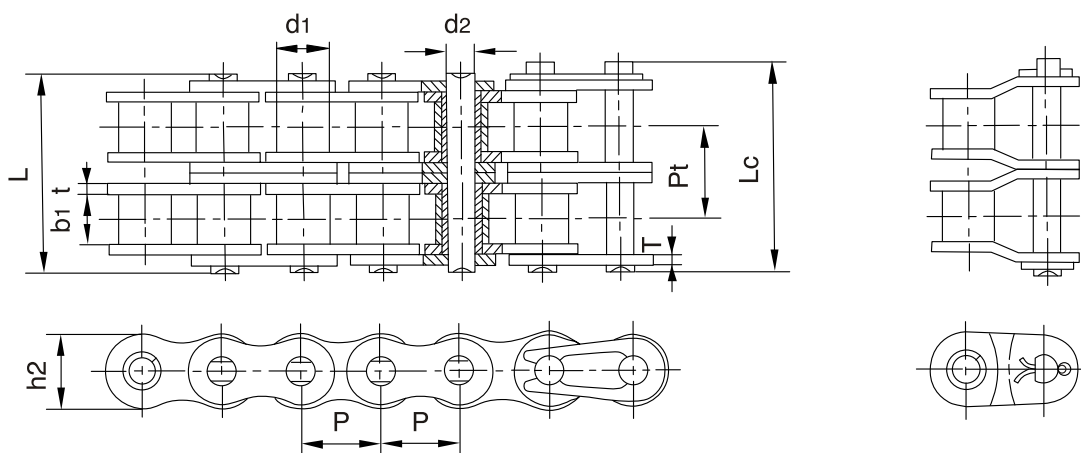
A35 **łańcuch - seria FV**

A36 **łańcuch - seria M - FV**

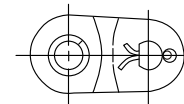
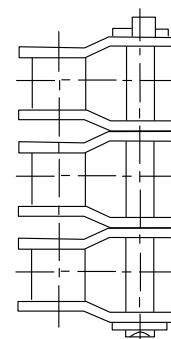
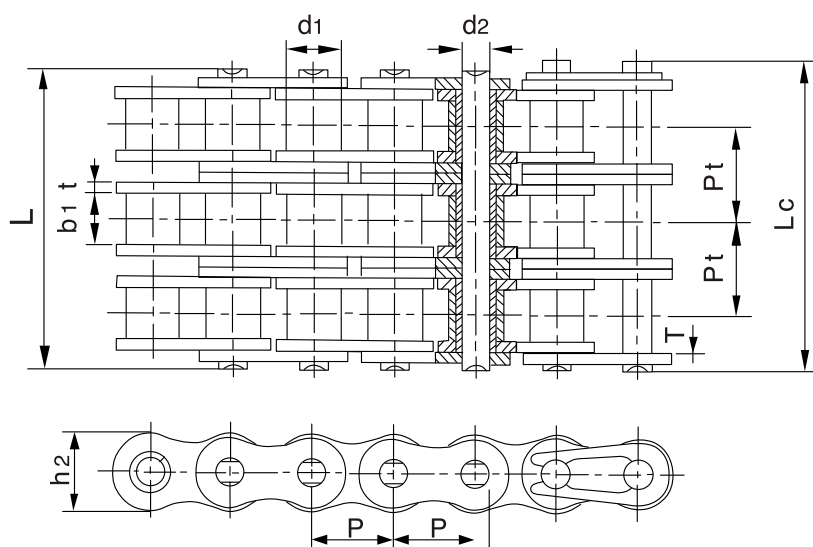
A37 - 41 **łańcuch -**



DIN/ISO	P mm.	d1 max mm.	b1 min mm.	d2 max mm.	L max mm.	Lc min mm.	h2 max mm.	t/T max mm.	Q min. kN	Q0 kN	q kg/m.
04B-1	6.000	4.00	2.80	1,85	6.80	7.8	5.00	0.60	3.0	3.2	0.11
05B-1	8.000	5.00	3.00	2.31	8.20	8.9	7.10	0.80	5.0	5.9	0.20
*06B-1	9.525	6.35	5.72	3.28	13.15	14.1	8.20	1.30	9.0	10.4	0.41
08B-1	12.700	8.51	7.75	4.45	16.70	18.2	11.80	1.60	18.0	19.4	0.69
10B-1	15.875	10.16	9.65	5.08	19.50	20.9	14.70	1.70	22.4	27.5	0.93
12B-1	19.050	12.07	11.68	5.72	22.50	24.2	16.00	1.85	29.0	32.2	1.15
16B-1	25.400	15.88	17.02	8.28	36.10	37.4	21.00	4.15/3.1	60.0	72.8	2.71
20B-1	31.750	19.05	19.56	10.19	41.30	45.0	26.40	4.5/3.5	95.0	106.7	3.70
24B-1	38.100	25.40	25.40	14.63	53.40	57.8	33.20	6.0/4.8	160.0	178.0	7.10
28B-1	44.450	27.94	30.99	15.90	65.10	69.5	36.70	7.5/6.0	200.0	222.0	8.50
32B-1	50.800	29.21	30.99	17.81	66.00	71.0	42.00	7.0/6.0	250.0	277.5	10.25
40B-1	63.500	39.37	38.10	22.89	82.20	89.2	52.96	8.5/8.0	355.0	394.0	16.35
48B-1	76.200	48.26	45.72	29.24	99.10	107.0	63.80	12/10	560.0	621.6	25.00



DIN/ISO	P mm.	d1 max mm.	b1 min mm.	d2 max mm.	L max mm.	Lc max mm.	h2 max mm.	t/T max mm.	Pt mm.	Q min. kN	Qo kN	q kg./m.
05B-2	8.000	5.00	3.00	2.31	13.9	14.5	7.10	0.80	5.64	7.8	10.2	0.33
*06B-2	9.525	6.35	5.72	3.28	23.4	24.4	8.20	1.30	10.24	16.9	18.7	0.77
08B-2	12.700	8.51	7.75	4.45	31.2	32.2	11.80	1.60	13.92	32.0	38.7	1.34
10B-2	15.875	10.16	9.65	5.08	36.1	37.5	14.70	1.70	16.59	44.5	56.2	1.84
12B-2	19.050	12.07	11.68	5.72	42.0	43.6	16.00	1.85	19.46	57.8	66.1	2.31
16B-2	25.400	15.88	17.02	8.28	68.0	69.3	21.00	4.15/3.1	31.88	106.0	133.0	5.42
20B-2	31.750	19.05	19.56	10.19	77.8	81.5	26.40	4.5/3.5	36.45	170.0	211.2	7.20
24B-2	38.100	25.40	25.40	14.63	101.7	106.2	33.20	6.0/4.8	48.36	280.0	319.2	13.40
28B-2	44.450	27.94	30.99	15.90	124.6	129.1	36.70	7.5/6.0	59.56	360.0	406.8	16.60
32B-2	50.800	29.21	30.99	17.81	124.6	129.6	42.00	7.0/6.0	58.55	450.0	508.5	21.00
40B-2	63.500	39.37	38.10	22.89	154.5	161.5	52.96	8.5/8.0	72.29	630.0	711.9	32.00
48B-2	76.200	48.26	45.72	29.24	190.4	198.2	63.80	12/10	91.21	1000.0	1130.0	50.00



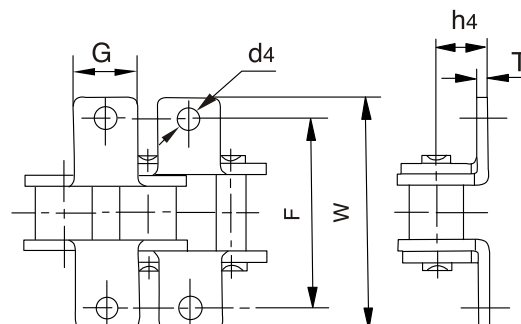
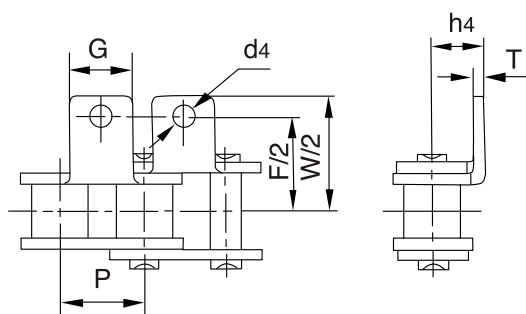
DIN/ISO	P mm.	d1 max mm.	b1 min mm.	d2 max mm.	L max mm.	Lc min mm.	h2 max mm.	t/T max mm.	Pt mm.	Q min. kN	Q0 kN	q kg./m.
05B-3	8.000	5.00	3.00	2.31	19.5	20.2	7.10	0.80	5.64	11.1	13.8	0.48
*06B-3	9.525	6.35	5.72	3.28	33.5	34.6	8.20	1.30	10.24	24.9	30.1	1.16
08B-3	12.700	8.51	7.75	4.45	45.1	46.1	11.80	1.60	13.92	47.5	57.8	2.03
10B-3	15.875	10.16	9.65	5.08	52.7	54.1	14.70	1.70	16.59	66.7	84.5	2.77
12B-3	19.050	12.07	11.68	5.72	61.5	63.1	16.00	1.85	19.46	86.7	101.8	3.46
16B-3	25.400	15.88	17.02	8.28	99.8	101.2	21.00	4.15/3.1	31.88	160.0	203.7	8.13
20B-3	31.750	19.05	19.56	10.19	114.2	117.9	26.40	4.5/3.5	36.45	250.0	290.0	10.82
24B-3	38.100	25.40	25.40	14.63	150.1	154.6	33.20	6.0/4.8	48.36	425.0	493.0	20.10
28B-3	44.450	27.94	30.99	15.90	184.2	188.7	36.70	7.5/6.0	59.56	530.0	609.5	24.92
32B-3	50.800	29.21	30.99	17.81	183.2	188.2	42.00	7.0/6.0	58.55	670.0	770.5	31.56
40B-3	63.500	39.37	38.10	22.89	226.8	233.8	52.96	8.5/8.0	72.29	950.0	1092.5	48.10
48B-3	76.200	48.26	45.72	29.24	281.6	289.4	63.80	12/10	91.21	1500.0	1710.0	75.00



A-1



K-1



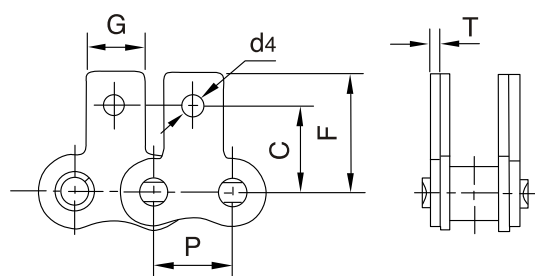
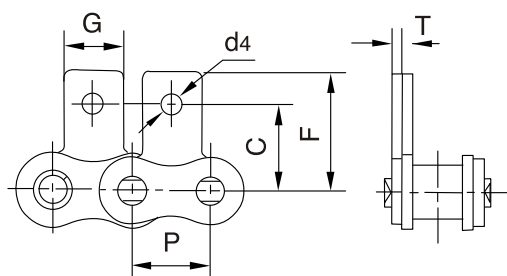
DIN/ISO	P mm.	G mm.	F mm.	W mm.	T mm.	h ₄ mm.	d ₄ mm.
*06B	9.525	8.0	19.04	27.0	1.30	6.50	3.5
08B	12.700	9.5	25.40	36.4	1.60	8.90	4.5
10B	15.875	14.3	31.75	44.6	1.70	10.31	5.3
12B	19.050	16.0	38.10	52.4	1.85	13.46	6.4
16B	25.400	19.1	50.80	72.6	3.10	15.88	6.4
20B	31.750	35.0	63.50	100.5	3.50	19.80	9.0
24B	38.100	30.0	76.20	108.4	4.80	26.67	10.5



SA-1



SK-1



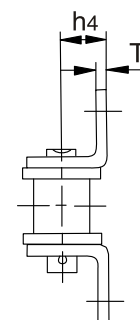
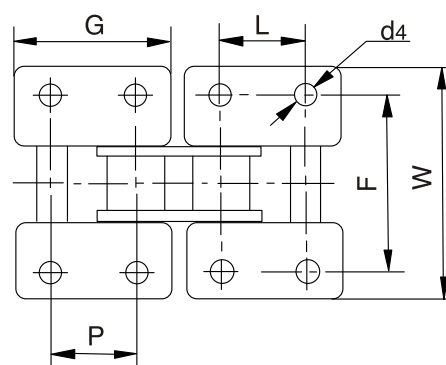
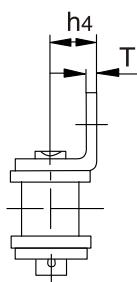
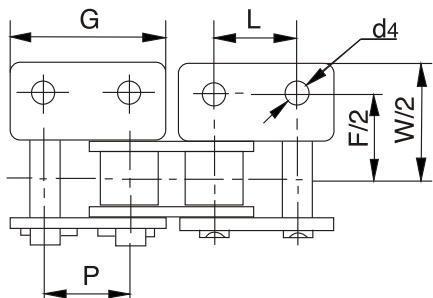
DIN/ISO	P mm.	G mm.	C mm.	F mm.	T mm.	d ₄ mm.
*06B	9.525	8.0	9.52	13.50	1.30	3.5
08B	12.700	9.5	13.35	18.90	1.60	4.3
10B	15.875	14.3	16.50	22.95	1.70	5.3
12B	19.050	16.0	21.45	28.60	1.85	6.4
16B	25.400	19.1	23.15	34.00	3.10	6.4
20B	31.750	35.0	30.50	45.70	3.50	9.0



WA-2



WK-2



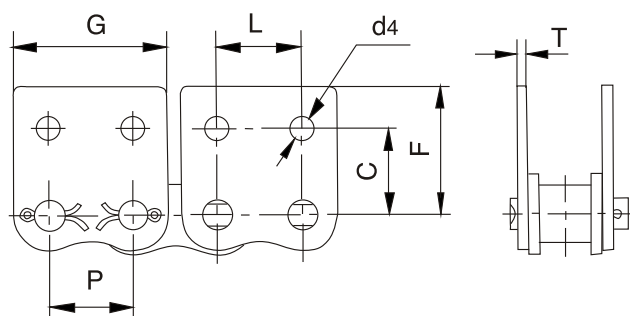
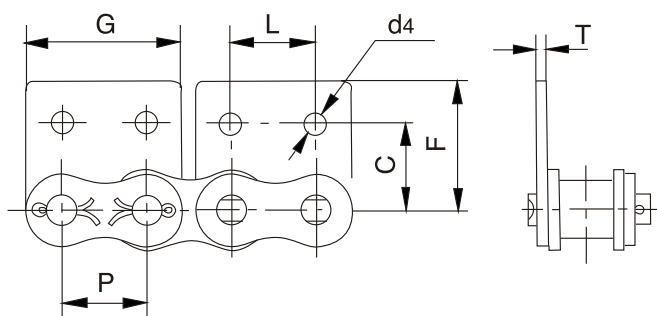
DIN/ISO	P mm.	G mm.	L mm.	F mm.	W mm.	T mm.	h ₄ mm.	d ₄ mm.
* 06	9.52	17,65	9.52	19.05	27,50	1.30	6.50	3.5
08B	12.700	24.00	12.700	25.40	36.4	1.60	8.90	4.3
10B	15.875	29.58	15.875	31.80	44.6	1.70	10.31	5.3
12B	19.050	34.05	19.050	38.10	52.4	1.85	13.46	6.4
16B	25.400	46.40	25.400	50.80	72.6	3.10	15.88	6.4
20B	31.750	58.10	31.750	63.00	100.5	3.50	19.80	9.0
24B	38.100	71.30	38.100	76.20	108.4	4.80	26.67	10.5



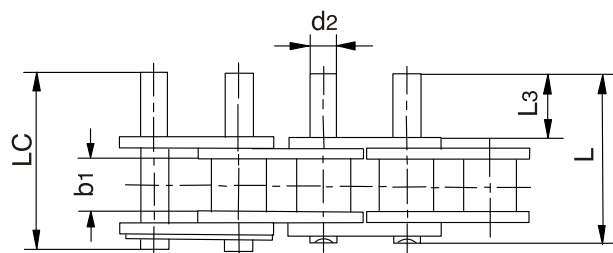
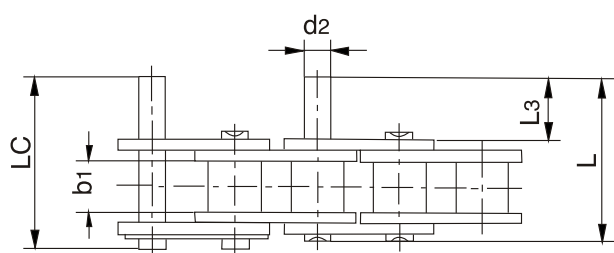
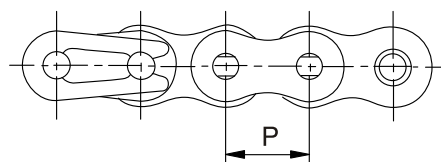
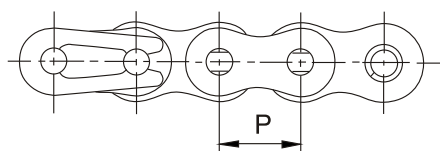
WSA-2



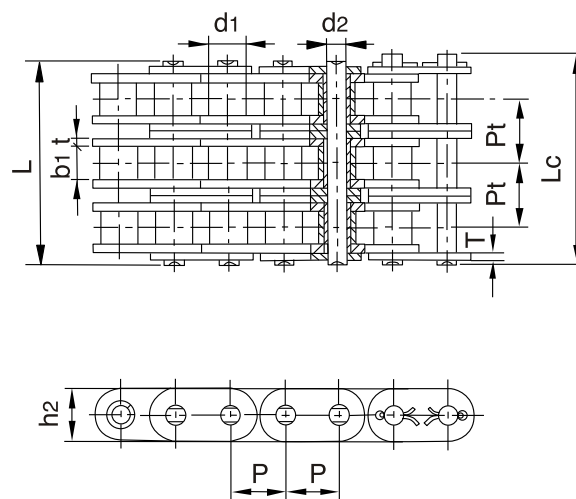
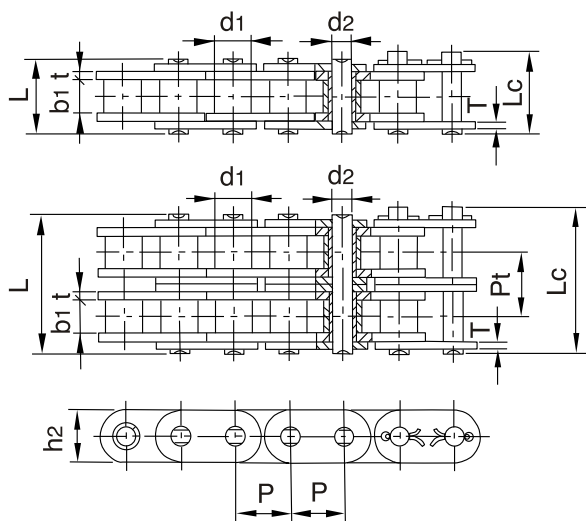
WSK-2



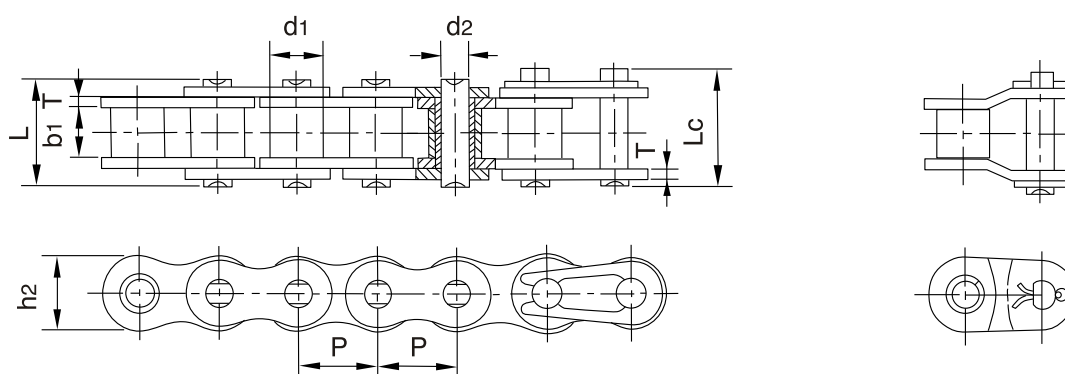
DIN/ISO	P mm.	G mm.	L mm.	C mm.	F mm.	T mm.	d ₄ mm.
*06B	9.52	17,65	9.52	9.52	13.50	1.30	3.5
8B	12.700	23.30	12.700	13.35	18.90	1.60	4.3
10B	15.875	29.58	15.875	16.50	22.95	1.70	5.3
12B	19.050	34.05	19.050	21.45	28.60	1.85	6.4
16B	25.400	46.40	25.400	23.15	34.00	3.10	6.4
20B	31.750	58.10	31.750	30.50	45.70	3.50	9.0



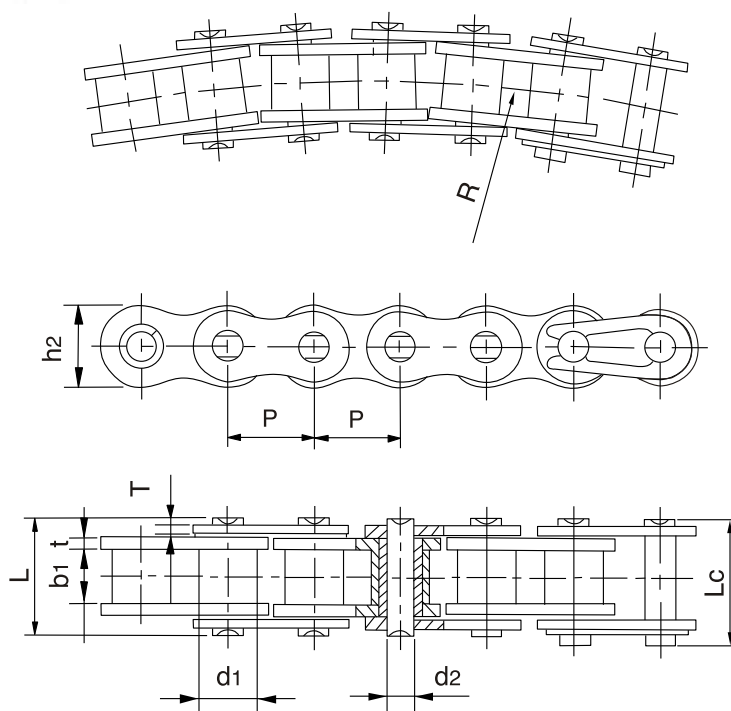
DIN/ISO	P mm.	b ₁ mm.	d ₂ mm.	L ₃ mm.	L mm.	L _c mm.
*06B	9.52	5.72	3.28	11.3	23.4	24.4
08B	12.700	7.75	4.45	15.5	31.2	32.2
10B	15.875	9.65	5.08	17.8	36.1	37.5
12B	19.050	11.68	5.72	20.7	42.0	43.6
16B	25.400	17.02	8.28	33.2	68.0	69.3



DIN/ISO	P mm.	d1 max mm.	b1 min mm.	d2 max mm.	L max mm.	Lc max mm.	h2 max mm.	t/T max mm.	Pt mm.	Q min. kN	Q0 kN	q kg./m.
C08B-1	12.700	8.51	7.75	4.45	16.7	18.2	11.8	1.60		18.0	19.5	0.80
C10B-1	15.875	10.16	9.65	5.08	19.5	20.9	14.7	1.70		22.4	27.9	1.06
C12B-1	19.050	12.07	11.68	5.72	22.5	25.2	16.0	1.85		29.0	32.2	1.32
C16B-1	25.400	15.88	17.02	8.28	36.1	39.1	21.0/24.0	4.15/3.1		60.0	72.8	3.08/3.49
C20B-1	31.750	19.05	19.56	10.19	41.3	45.0	26.4	4.5/3.5		95.0	106.7	4.16
C24B-1	38.100	25.40	25.40	14.63	53.4	57.8	33.2	6.0/4.8		160.0	178.0	7.47
C28B-1	44.450	27.94	30.99	15.90	65.1	69.5	36.7	7.5/6.0		200.0	222.0	9.90
C32B-1	50.800	29.21	30.99	17.81	66.0	71.0	42.0	7.0/6.0		250.0	277.5	10.45
C08B-2	12.700	8.51	7.75	4.45	31.2	32.2	11.8	1.60	13.92	32.0	38.7	1.45
C10B-2	15.875	10.16	9.65	5.08	36.1	37.5	14.7	1.70	16.59	44.5	57.8	2.00
C12B-2	19.050	12.07	11.68	5.72	42.0	44.7	16.0	1.85	19.46	57.8	66.1	2.62
C16B-2	25.400	15.88	17.02	8.28	68.0	71.0	21.0/24.0	4.15/3.1	31.88	106.0	133.0	6.10/6.92
C20B-2	31.750	19.05	19.56	10.19	77.8	81.5	26.4	4.5/3.5	36.45	170.0	211.2	8.23
C24B-2	38.100	25.40	25.40	14.63	101.7	106.2	33.2	6.0/4.8	48.36	280.0	319.2	14.77
C28B-2	44.450	27.94	30.99	15.90	124.6	129.1	36.7	7.5/6.0	59.56	360.0	406.8	19.82
C32B-2	50.800	29.21	30.99	17.81	124.6	129.6	42.0	7.0/6.0	58.55	450.0	508.5	20.94
C08B-3	12.700	8.51	7.75	4.45	45.1	46.1	11.8	1.60	13.92	47.5	57.8	2.10
C10B-3	15.875	10.16	9.65	5.08	52.7	54.1	14.7	1.70	16.59	66.7	84.5	2.87
C12B-3	19.050	12.07	11.68	5.72	61.5	64.2	16.0	1.85	19.46	86.7	101.8	3.89
C16B-3	25.400	15.88	17.02	8.28	99.8	102.9	21.0/24.0	4.15/3.1	31.88	160.0	203.7	9.12/10.34
C20B-3	31.750	19.05	19.56	10.19	114.2	117.9	26.4	4.5/3.5	36.45	250.0	290.0	11.34
C24B-3	38.100	25.40	25.40	14.63	150.1	154.6	33.2	6.0/4.8	48.36	425.0	493.0	22.10
C28B-3	44.450	27.94	30.99	15.90	184.2	188.7	36.7	7.5/6.0	59.56	530.0	609.5	29.64
C32B-3	50.800	29.21	30.99	17.81	183.2	88.2	42.0	7.0/6.0	58.55	670.0	770.5	31.27



DIN/ISO	ANSI	P mm.	d1 máx mm.	b1 mín mm.	d2 máx mm.	L máx mm.	Lc mín mm.	h2 máx mm.	T máx mm.	Q min. kN	Q0 kN	q kg./m.
*03C	*15	4.7625	2.48	2.38	1.62	6.10	6.90	4.30	0.60	1.80	2.0	0.08
*04C-1	*25	6.350	3.30	3.18	2.31	7.90	8.40	6.00	0.80	3.50	4.6	0.15
*06C-1	*35	9.525	5.08	4.77	3.58	12.40	13.17	9.00	1.30	7.90	10.8	0.33
085-1	41	12.700	7.77	6.25	3.58	13.75	15.00	9.91	1.30	6.67	12.6	0.41
08A-1	40	12.700	7.95	7.85	3.96	16.60	17.80	12.00	1.50	14.10	17.5	0.62
10A-1	50	15.875	10.16	9.40	5.08	20.70	22.20	15.09	2.03	22.20	29.4	1.02
12A-1	60	19.050	11.91	12.57	5.94	25.90	27.70	18.00	2.42	31.80	41.5	1.50
16A-1	80	25.400	15.88	15.75	7.92	32.70	35.00	24.00	3.25	56.70	69.4	2.60
20A-1	100	31.750	19.05	18.90	9.53	40.40	44.70	30.00	4.00	88.50	109.2	3.91
24A-1	120	38.100	22.23	25.22	11.10	50.30	54.30	35.70	4.80	127.00	156.3	5.62
28A-1	140	44.450	25.40	25.22	12.70	54.40	59.00	41.00	5.60	172.40	212.0	7.50
32A-1	160	50.800	28.58	31.55	14.27	64.80	69.60	47.80	6.40	226.80	278.9	10.10
36A-1	180	57.150	35.71	35.48	17.46	72.80	78.60	53.60	7.20	280.20	341.8	13.45
40A-1	200	63.500	39.68	37.85	19.85	80.30	87.20	60.00	8.00	353.80	431.6	16.15
48A-1	240	76.200	47.63	47.35	23.81	95.50	103.00	72.39	9.50	510.30	622.5	23.20

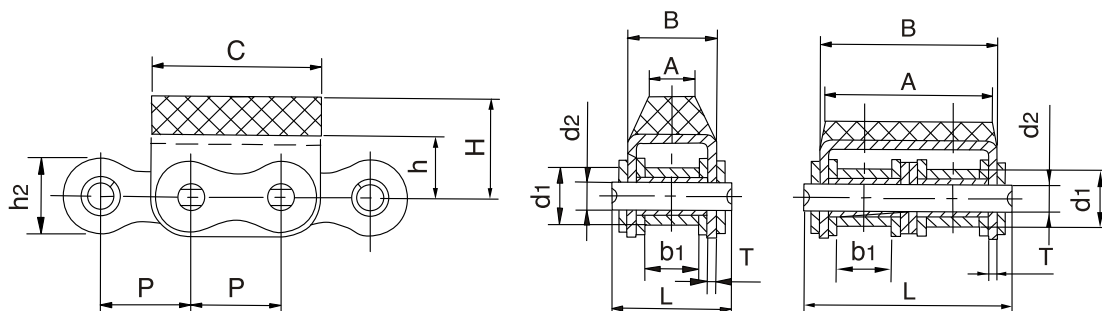


DIN/ISO	P mm.	d1 máx mm.	b1 mín mm.	d2 máx mm.	L máx mm.	Lc mín mm.	h2 max mm.	t/T máx mm.	R mín. mm.	Q mín. kN	Q0 kN	q kg./m.
40SB	12.70	7.95	7.85	3.96	16.9	18.1	11.7	1.5	350	13.8	15.2	0.80
43SB	12.70	7.95	7.85	3.45	18.3	19.5	11.7	1.5	305	12.0	13.2	0.64
50SB	15.875	10.16	9.40	4.37	20.7	22.7	15.09	2.03	400	20.6	22.7	1.09
60SB	19.05	11.91	12.57	5.34	26.6	28.4	18.0	2.42	500	15.7	17.3	1.42
63SB	19.05	11.91	12.68	5.08	28.8	30.6	17.2	2.42/2.03	350	12.5	13.8	1.40
08BSB	12.70	8.51	7.75	3.97	17.4	18.7	11.8	1.6	400	14.0	15.4	0.70
08BSBF-1	12.70	8.51	7.75	3.97	16.3	17.6	11.8	1.6/1.2	400	12.8	14.1	0.65
10BSB	15.875	10.16	9.65	4.50	20.1	21.5	14.7	1.7	400	15.6	17.2	0.93
12BSB	19.05	12.07	11.68	5.12	23.1	24.8	16.0	1.85	500	20.5	22.6	1.16
C2050SB	31.75	10.16	9.40	5.08	21.3	22.6	15.0	2.03	800	21.8	24.1	1.09

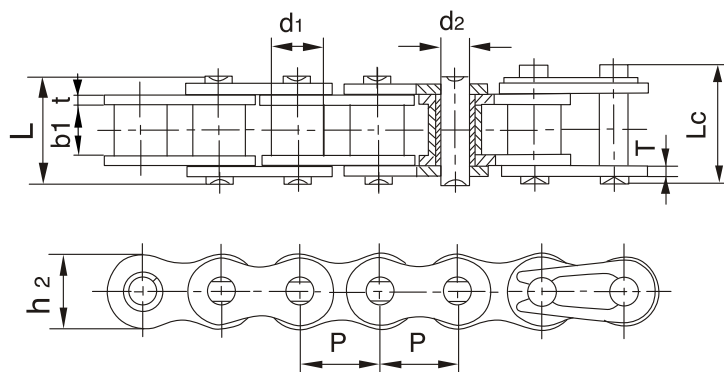


TIPO G-1

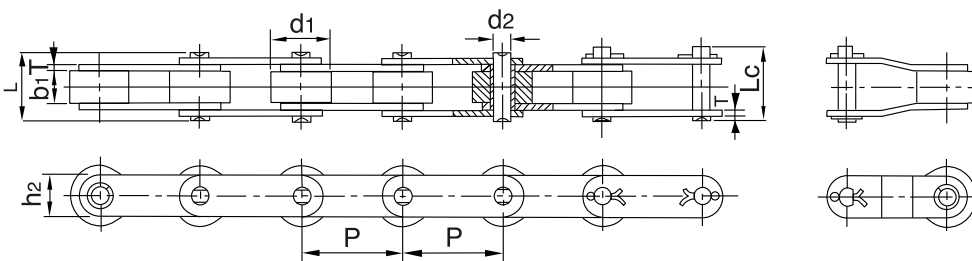
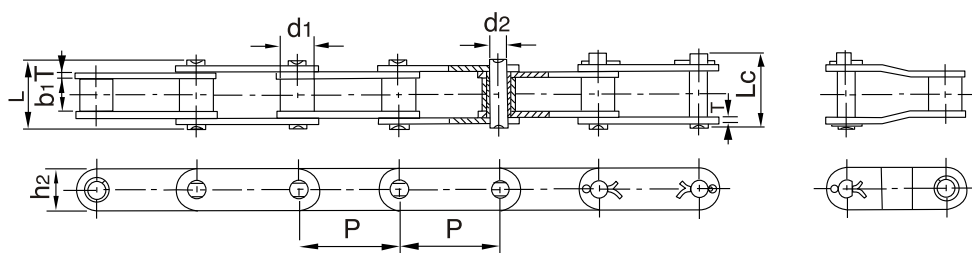
TIPO G-2



DIN/ISO	P mm.	d1 máx mm.	b1 mín mm.	d2 máx mm.	L máx mm.	h2 máx mm.	A mm.	B mm.	C mm.	h mm.	H mm.	T mm.	Q mín. kN	q kg./m.
08B-G1	12.70	8.51	7.75	4.45	20.0	11.8	12.0	14.6	24.2	8.3	12.3	1.60	18.0	1.19
08B-G2	12.70	8.51	7.75	4.45	34.3	11.8	24.0	28.4	24.2	8.3	12.3	1.50	32.0	2.07
10B-G1	15.875	10.16	9.65	5.08	23.2	14.7	13.5	16.8	30.0	11.3	17.0	1.70	22.4	1.62
10B-G2	15.875	10.16	9.65	5.08	39.7	14.7	33.1	33.3	30.0	11.3	17.0	1.70	44.5	2.56
12B-G1	19.05	12.07	11.68	5.72	25.7	16.0	10.0	19.6	36.0	13.0	21.0	1.85	29.0	2.01
12B-G2	19.05	12.07	11.68	5.72	45.3	16.0	39.1	39.3	36.0	12.0	16.0	1.85	57.8	3.21
16A-G1	25.40	15.88	15.75	7.92	37.2	24.0	23.6	27.5	46.0	16.0	20.0	2.42	42.0	3.97
20B-G1	31.75	19.05	19.56	10.19	48.0	26.4	30.0	36.0	57.0	21.0	27.0	3.50	66.5	6.19
24B-G1	38.10	25.40	25.40	14.63	61.6	33.2	44.0	47.0	72.6	28.0	34.0	4.50	112.0	11.85



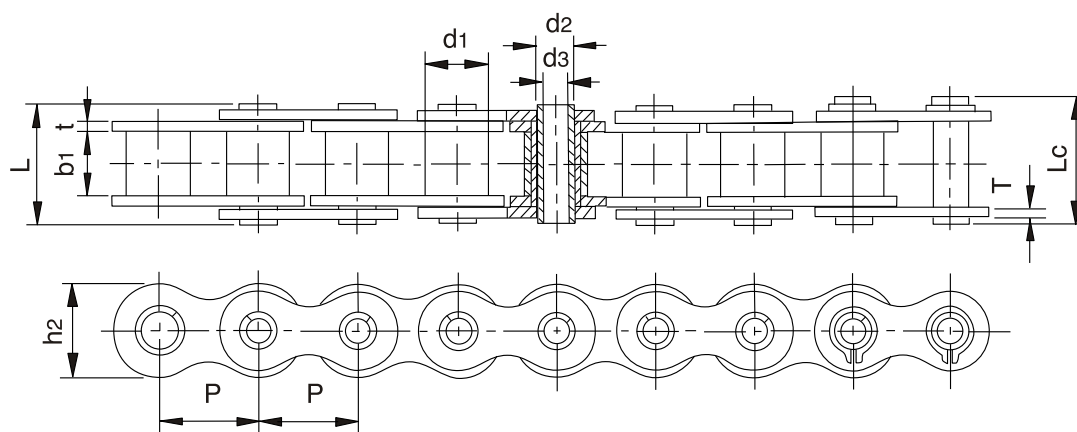
DIN/ISO	P mm.	d1 máx mm.	b1 mín mm.	d2 máx mm.	L máx mm.	Lc máx mm.	h2 máx mm.	t/T máx mm.	Q mín. kN	Q0 kN	q kg./m.
*25SS	6.350	3.30	3.18	2.31	7.9	8.4	6.00	0.8	2.5	2.8	0.15
*35SS	9.525	5.08	4.77	3.58	12.4	13.17	9.00	1.30	5.5	6.6	0.33
40SS	12.700	7.95	7.85	3.96	16.6	17.8	12.00	1.50	9.6	10.8	0.63
50SS	15.875	10.16	9.40	5.08	20.7	22.2	15.09	2.03	15.2	17.2	1.03
60SS	19.050	11.91	12.57	5.94	25.9	27.7	18.00	2.42	21.7	26.4	1.51
80SS	25.400	15.88	15.75	7.92	32.7	35.0	24.00	3.25	38.9	46.6	2.62
100SS	31.750	19.05	18.90	9.53	40.4	44.7	30.00	4.00	60.0	70.2	3.94
120SS	38.100	22.23	25.22	11.10	50.3	54.3	35.70	4.8	88.9	104.8	5.72
04BSS	6.000	4.00	2.80	1.85	6.80	7.8	5.00	0.60	2.0	2.4	0.11
05BSS	8.000	5.00	3.00	2.31	8.20	8.9	7.10	0.80	3.5	4.1	0.20
#06BSS	9.525	6.35	5.72	3.28	13.15	14.1	8.20	1.30	6.2	6.8	0.41
08BSS	12.700	8.51	7.75	4.45	16.7	18.2	11.80	1.60	12.0	14.3	0.70
10BSS	15.875	10.16	9.65	5.08	19.5	20.9	14.70	1.70	14.5	17.2	0.94
12BSS	19.050	12.07	11.68	5.72	22.5	24.2	16.00	1.85	18.5	20.9	1.16
16BSS	25.400	15.88	17.02	8.28	36.1	37.4	21.00	4.15/3.1	40.0	47.6	2.73
20BSS	31.750	19.05	19.56	10.19	41.3	45.0	26.40	4.5/3.5	59.0	69.6	3.73
24BSS	38.100	25.40	25.40	14.63	53.4	57.8	33.20	6.0/4.8	112.0	126.6	7.20



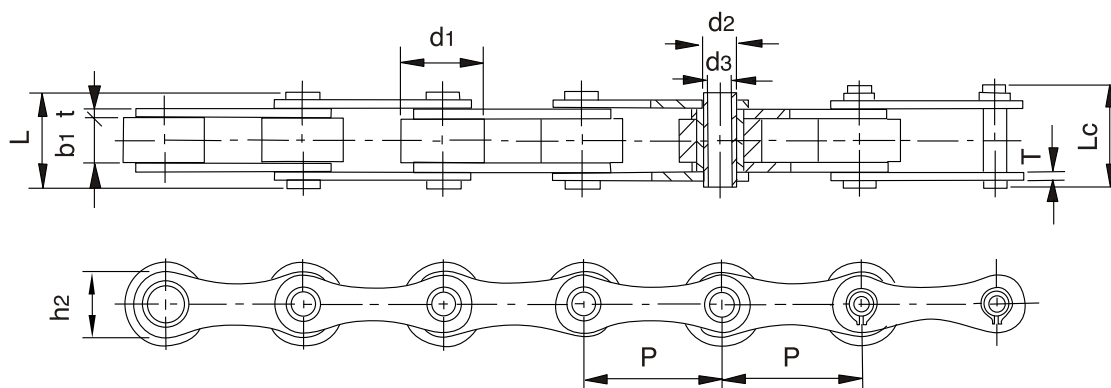
DIN/ISO	P mm.	d1 máx mm.	b1 min mm.	d2 máx mm.	L máx mm.	Lc máx mm.	h2 máx mm.	T máx mm.	Q min. kN	Q0 kN	q kg./m.
C2040SS C2042SS	25.40	7.95 15.88	7.85	3.96	16.6	17.8	12.0	1.50	9.6	11.0	0.51 0.85
C2040HSS	25.40	7.95	7.85	3.96	18.8	19.9	12.0	2.03	9.6	11.0	0.66
C208BSS C208BLSS	25.40	8.51 15.88	7.75	4.45	16.7	18.2	11.8	1.60	12.0	13.8	0.56 0.90
C2050SS C2052SS	31.75	10.16 19.05	9.40	5.08	20.7	22.2	15.0	2.03	15.2	17.5	0.79 1.29
C2060SS C2062SS	38.10	11.91 22.23	12.57	5.94	25.9	27.7	18.0	2.42	21.7	24.9	1.13 1.63
C2060HSS C2062HSS	38.10	11.91 22.23	12.57	5.94	29.2	31.6	18.0	3.25	21.7	24.9	1.46 2.10
C2080SS C2082SS	50.80	15.88 28.58	15.75	7.92	32.7	36.5	24.0	3.25	38.9	44.7	2.11 3.16
C2080HSS C2082HSS	50.80	15.88 28.58	15.75	7.92	36.2	39.4	24.0	4.00	38.9	44.7	2.57 3.63
C2100SS C2102SS	63.50	19.05 39.67	18.90	9.53	40.4	44.7	30.0	4.00	60.0	69.0	3.05 4.89
C2100HSS C2102HSS	63.50	19.05 39.67	18.90	9.53	43.6	46.9	30.0	4.80	60.0	69.0	3.61 5.45



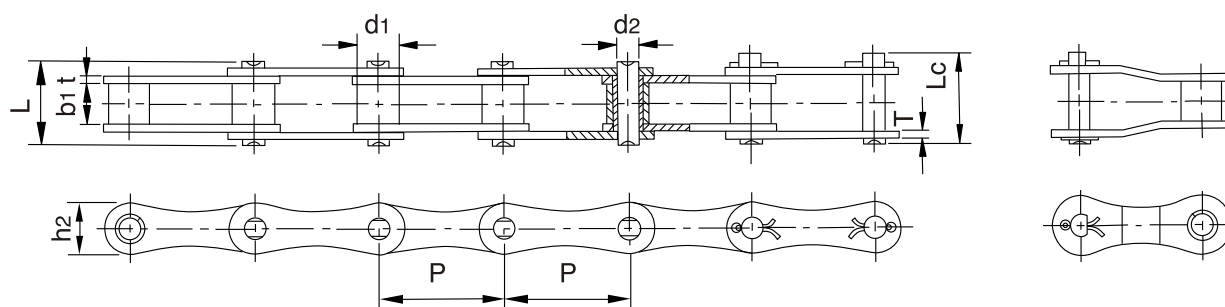
Tipo A



Tipo B



DIN/ISO	P mm.	d1 máx mm.	b1 mín mm.	d2 máx mm.	d3 mín mm.	L máx mm.	Lc máx mm.	h2 máx mm.	t/T máx mm.	Q min kN	Q ₀ kN	q kg/m	
08BHPFSS	12.700	8.51	7.75	6.55	4.50	16.4	17.6	11.80	1.6/1.3	7.8	8.5	0.57	A
40HPSS	12.700	7.95	7.85	5.63	4.00	16.5	17.6	12.00	1.50	7.7	8.5	0.55	A
50HPSS	15.875	10.16	9.40	7.03	5.13	20.7	21.9	15.09	2.03	14.0	15.4	0.92	A
60HPSS	19.050	11.91	12.70	8.31	6.00	25.8	26.8	18.00	2.42	16.8	18.5	1.31	A
*12BHPSS	19.050	12.07	11.68	6.50	4.00	21.6	22.8	15.90	1.85	16.5	18.2	1.10	A
80HPSS	25.400	15.88	15.75	11.40	8.05	32.5	33.8	24.00	3.25	35.0	38.7	2.29	A
C2040HPSS	25.400	7.95	7.85	5.63	4.00	16.5	17.6	12.00	1.50	7.7	8.6	0.47	B
C2050HPSS	31.750	10.16	9.40	7.22	5.12	20.5	21.8	15.00	2.03	14.3	15.7	0.77	B
C2060HPSS	38.100	11.91	12.70	8.31	6.00	25.8	26.8	17.00	2.42	16.8	18.6	1.03	B
C2080HPSS	50.800	15.88	15.75	11.40	8.05	32.5	33.8	24.00	3.25	35.0	38.0	1.83	B
*HB50.8SS	50.800	30.00	10.50	11.40	8.20	27.4	28.6	26.00	3.10	35.0	38.5	2.60	



DIN/ISO	ANSI	P mm.	d1 máx mm.	b1 mín mm.	d2 máx mm.	L máx mm.	Lc mm.	h2 máx mm.	t/T máx mm.	Q mín. kN	Qo kN	q kg./m.
208A	2040	25.40	7.95	7.85	3.96	16.6	17.8	12.0	1.50	14.1	16.7	0.42
208B		25.40	8.51	7.75	4.45	16.7	18.2	11.8	1.60	18.0	19.4	0.45
210A	2050	31.75	10.16	9.40	5.08	20.7	22.2	15.0	2.03	22.2	28.1	0.73
210B		31.75	10.16	9.65	5.08	19.5	20.9	14.7	1.70	22.4	27.5	0.65
212A	2060	38.10	11.91	12.57	5.94	25.9	27.7	18.0	2.42	31.8	36.8	1.02
212B		38.10	12.07	11.68	5.72	22.5	25.2	16.0	1.85	29.0	32.2	0.76
216A	2080	50.80	15.88	15.75	7.92	32.7	36.5	24.0	3.25	56.7	65.7	1.70
216AH		50.80	15.88	15.75	7.92	36.2	39.4	24.0	4.00	56.7	70.0	2.17
216B		50.80	15.88	17.02	8.28	36.1	39.1	21.0	4.15/3.1	60.0	72.8	1.75
220A	2100	63.50	19.05	18.90	9.53	40.4	44.7	30.0	4.00	88.5	102.6	2.55
220B		63.50	19.05	19.56	10.19	41.3	45.0	26.4	4.5/3.5	95.0	106.7	2.62
224A	2120	76.20	22.23	25.22	11.10	50.3	54.3	35.7	4.80	127.0	147.3	4.06
224B		76.20	25.40	25.40	14.63	53.4	57.8	33.2	6.0/4.8	160.0	178.0	4.70
228B		88.90	27.94	30.99	15.90	65.1	69.5	36.7	7.5/6.0	200.0	222.0	6.23
232B		101.60	29.21	30.99	17.81	66.0	71.0	42.0	7.0/6.0	250.0	277.5	6.72

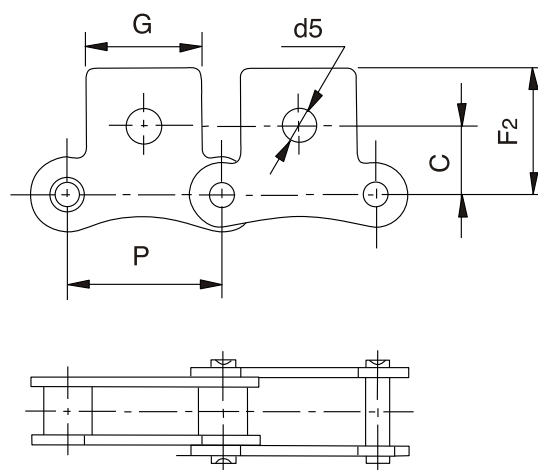
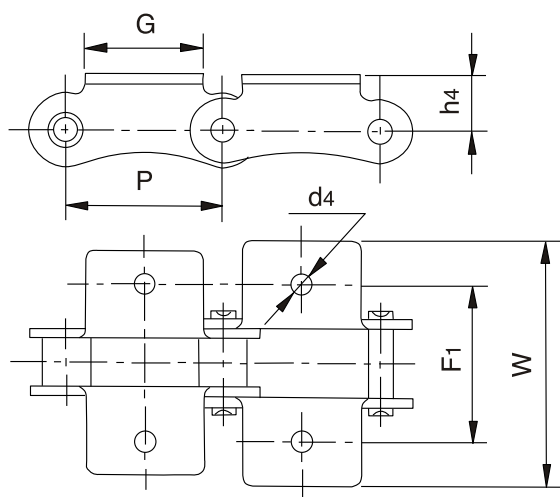


A-1

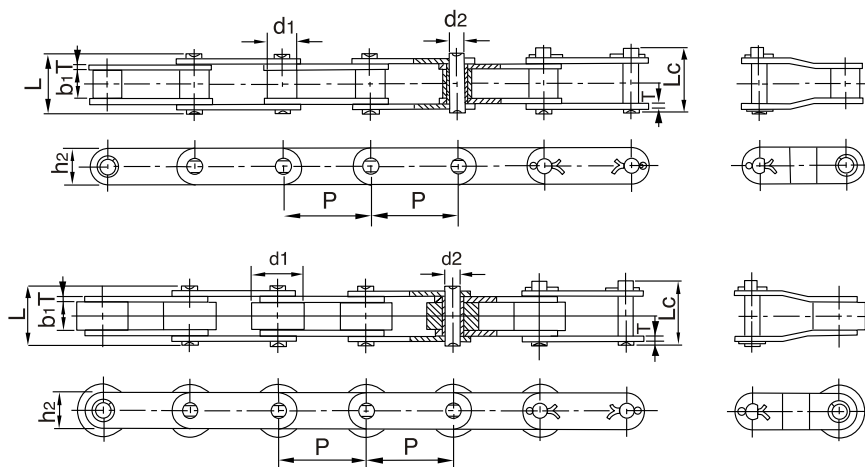
SA-1

K-1

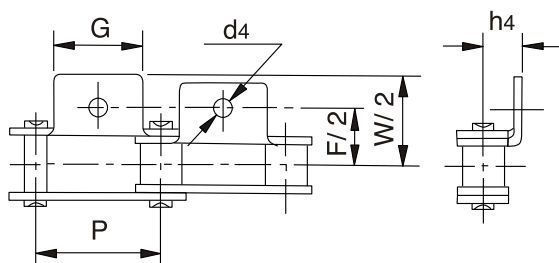
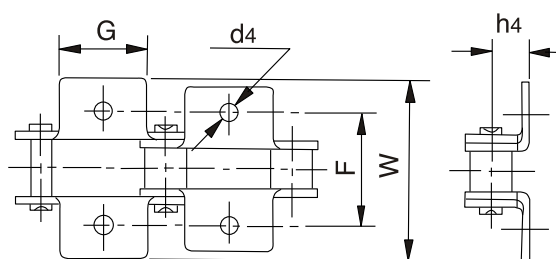
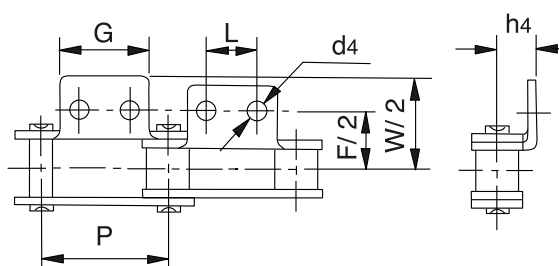
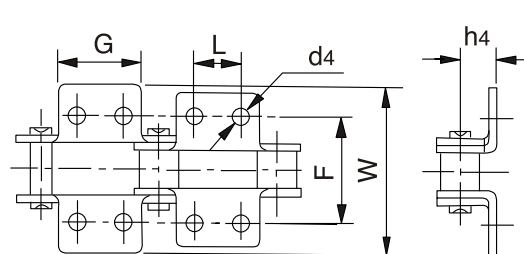
SK-1



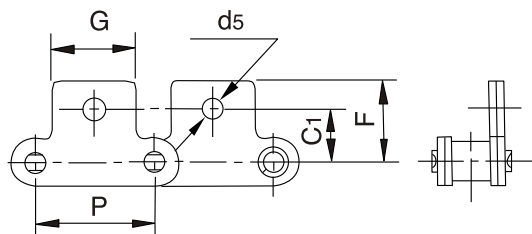
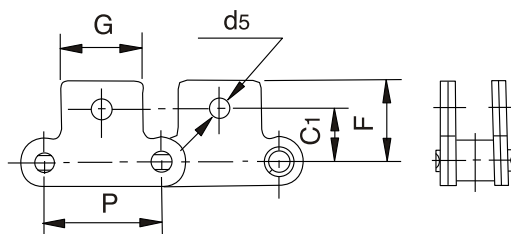
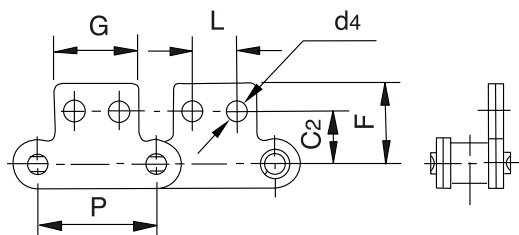
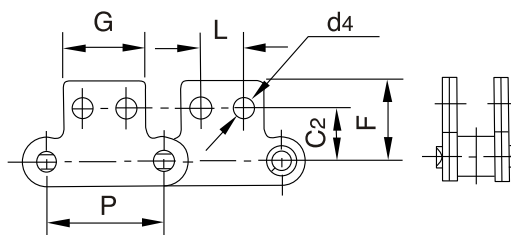
DIN/ISO	ANSI	P mm.	G mm.	F ₁ mm.	W mm.	h ₄ mm.	d ₄ mm.	C mm.	F ₂ mm.	d ₅ mm.
208A	2040	25.40	19.1	25.4	39.6	9.1	3.4	11.1	20.5	5.5
210A	2050	31.75	23.8	31.8	49.0	11.1	5.5	14.3	25.0	6.6
212A	2060	38.10	28.6	42.9	67.8	14.7	5.5	17.5	32.9	9.2
216A	2080	50.80	38.1	55.6	87.8	19.1	6.8	22.2	43.5	11.0
220A	2100	63.50	47.6	66.6	107.5	23.4	9.2	28.6	50.4	13.0
224A	2120	76.20	57.2	79.3	127.5	27.8	11.0	33.3	55.5	15.0



DIN/ISO	ANSI	P	d1 máx	b1 mín	d2 máx	L máx	Lc máx	h2 máx	T máx	Q mín.	Q0	q
		mm.	mm.	mm.	mm.	mm.	mm.	mm.	mm.	kN	kN	kg./m.
C208A C208AL	C2040 C2042	25.40	7.95 15.88	7.85	3.96	16.6	17.8	12.0	1.50	14.1	16.7	0.50 0.84
C208AH	C2040H	25.40	7.95	7.85	3.96	18.8	19.9	12.0	2.03	14.1	17.2	0.65
C208B C208BL		25.40	8.51 15.88	7.75	4.45	16.7	18.2	11.8	1.60	18.0	19.4	0.55 0.89
C210A C210AL	C2050 C2052	31.75	10.16 19.05	9.40	5.08	20.7	22.2	15.0	2.03	22.2	28.1	0.78 1.27
C212A C212AL	C2060 C2062	38.10	11.91 22.23	12.57	5.94	25.9	27.7	18.0	2.42	31.8	36.8	1.12 1.61
C212AH C212AHL	C2060H C2062H	38.10	11.91 22.23	12.57	5.94	29.2	31.6	18.0	3.25	31.8	41.6	1.44 2.07
C216A C216AL	C2080 C2082	50.80	15.88 28.58	15.75	7.92	32.7	36.5	24.0	3.25	56.7	65.7	2.08 3.12
C216AH C216AHL	C2080H C2082H	50.80	15.88 28.58	15.75	7.92	36.2	39.4	24.0	4.00	56.7	70.0	2.54 3.58
C220A C220AL	C2100 C2102	63.50	19.05 39.67	18.90	9.53	40.4	44.7	30.0	4.00	88.5	102.6	3.01 4.83
C220AH C220AHL	C2100H C2102H	63.50	19.05 39.67	18.90	9.53	43.6	46.9	30.0	4.80	88.5	112.4	3.56 5.38
C224A C224AL	C2120 C2122	76.20	22.23 44.45	25.22	11.10	50.3	54.3	35.7	4.80	127.0	147.3	4.66 7.66
C224AH C224AHL	C2120H C2122H	76.20	22.23 44.45	25.22	11.10	53.5	57.5	35.7	5.60	127.0	160.9	5.26 8.26
C232A C232AL	C2160 C2162	101.60	28.58 57.15	31.75	14.27	64.8	69.6	47.8	6.40	226.8	278.9	8.15 13.00
C232AH C232AHL	C2160H C2162H	101.60	28.58 57.15	31.75	14.27	68.2	73.0	47.8	7.20	228.8	285.8	9.06 12.77

A-1

K-1

A-2

K-2


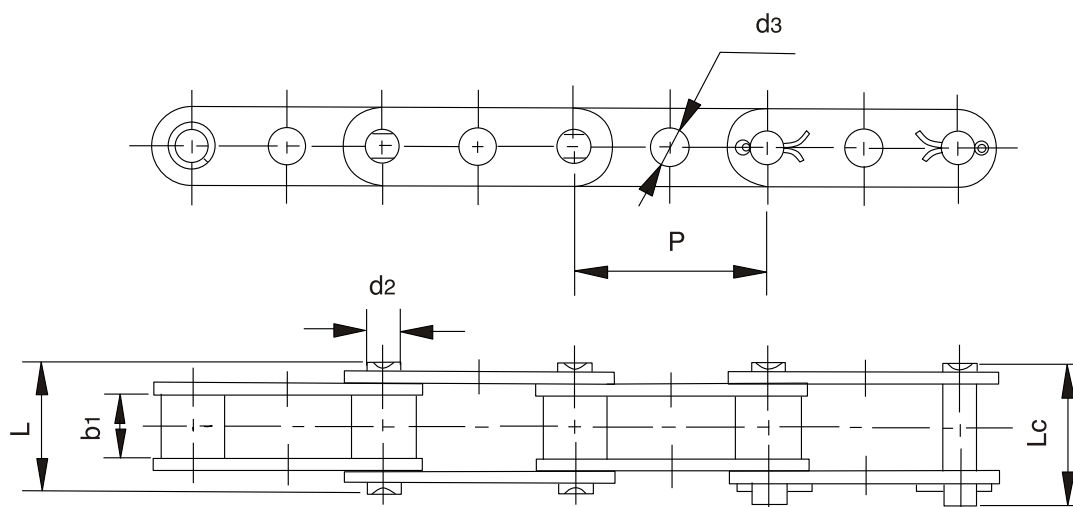
DIN/ISO	ANSI	P mm.	G mm.	L mm.	F mm.	W mm.	h ₄ mm.	d ₄ mm.
C208A C208AL	C2040 C2042	25.40	19.1	9.5	25.4	39.6	9.1	3.4
C208B C208BL		25.40	23.2	12.7	25.4	39.6	9.1	4.5
C210A C210AL	C2050 C2052	31.75	23.8	11.9	31.8	49.0	11.1	5.5
C212A C212AL	C2060 C2062	38.10	28.6	14.3	42.9	67.8	14.7	5.5
C212AH C212AHL	C2060H C2062H	38.10	28.6	14.3	42.9	67.8	14.7	5.5
C216A C216AL	C2080 C2082	50.80	38.1	19.1	55.6	87.8	19.1	6.8
C216AH C216AHL	C2080H C2082H	50.80	38.1	19.1	55.6	87.8	19.1	6.8
C220A C220AL	C2100 C2102	63.50	47.6	23.8	66.6	107.5	23.4	9.2
C220AH C220AHL	C2100H C2102H	63.50	47.6	23.8	66.6	107.5	23.4	9.2
C224A C224AL	C2120 C2122	76.20	57.2	28.6	79.3	121.4	27.8	11.0
C224AH C224AHL	C2120H C2122H	76.20	57.2	28.6	79.3	121.4	27.8	11.0
C232A C232AL	C2160 C2162	101.60	76.2	38.1	104.7	151.6	36.5	13.1
C232AH C232AHL	C2160H C2162H	101.60	76.2	38.1	104.7	151.6	36.5	13.1

SA-1

SK-1

SA-2

SK-2


DIN/ISO	ANSI	P mm.	G mm.	L mm.	C ₁ mm.	C ₂ mm.	F mm.	d ₄ mm.	d ₅ mm.
C208A C208AL	C2040 C2042	25.40	19.1	9.5	11.1	13.5	20.5	3.4	5.5
C208B C208BL		25.40	23.2	12.7	11.1	13.5	20.5	4.5	5.5
C210A C210AL	C2050 C2052	31.75	23.8	11.9	14.3	15.9	25.0	5.5	6.6
C212A C212AL	C2060 C2062	38.10	28.6	14.3	17.5	19.1	32.9	5.5	9.2
C212AH C212AHL	C2060H C2062H	38.10	28.6	14.3	17.5	19.1	32.9	5.5	9.2
C216A C216AL	C2080 C2082	50.80	38.1	19.1	22.2	25.4	43.5	6.6	11.0
C216AH C216AHL	C2080H C2082H	50.80	38.1	19.1	22.2	25.4	43.5	6.6	11.0
C220A C220AL	C2100 C2102	63.50	47.6	23.8	28.6	31.8	50.4	8.4	13.0
C220AH C220AHL	C2100H C2102H	63.50	47.6	23.8	28.6	31.8	50.4	8.4	13.0

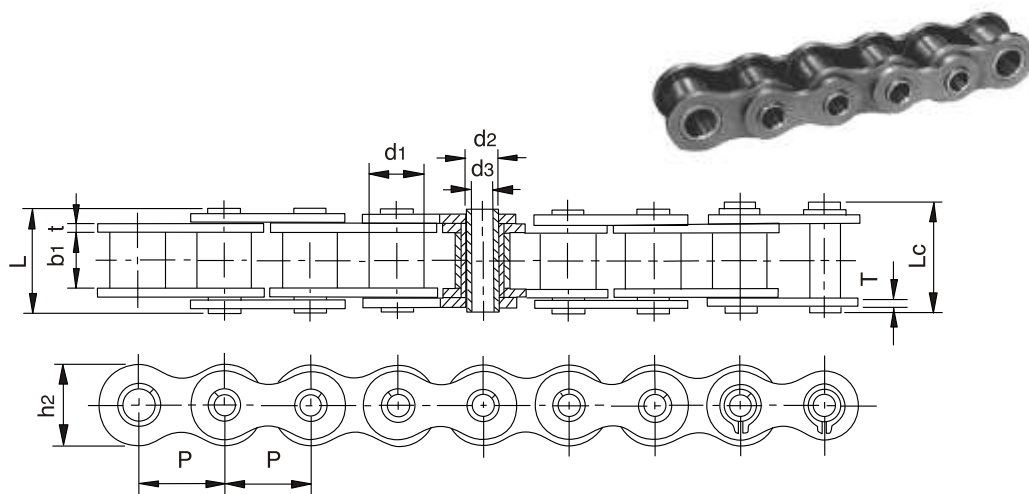


GK-1

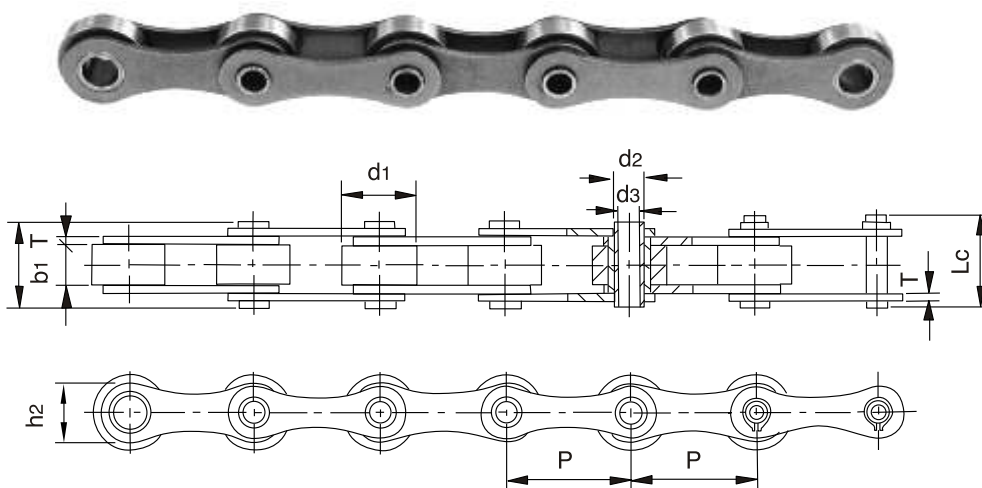


DIN/ISO	ANSI	P mm.	b1 mm.	d2 mm.	d3 mm.	L mm.	Lc mm.
C208A C208AL	C2040 C2042	25.40	7.85	3.96	4.1	16.6	18.8
C210A C210AL	C2050 C2052	31.75	9.40	5.08	5.1	20.7	23.3
C212A C212AL	C2060 C2062	38.10	12.57	5.94	8.3	25.9	28.3
C212AH C212AHL	C2060H C2062H	38.10	12.57	5.94	8.3	29.2	31.6
C216A C216AL	C2080 C2082	50.80	15.75	7.92	8.1	32.7	36.5
C216AH C216AHL	C2080H C2082H	50.80	15.75	7.92	8.1	36.2	39.4
C220A C220AL	C2100 C2102	63.50	18.90	9.53	10.1	40.4	44.7
C220AH C220AHL	C2100H C2102H	63.50	18.90	9.53	10.1	43.6	46.9

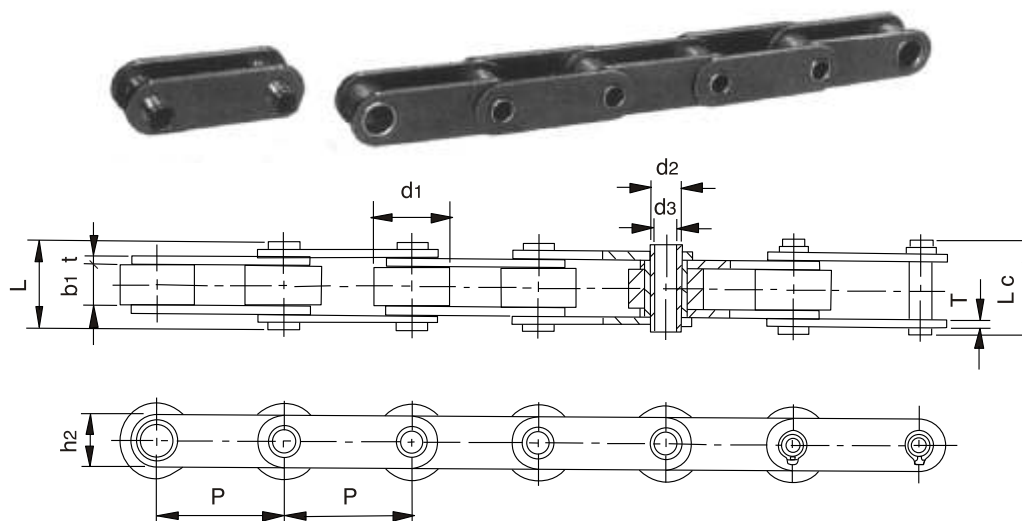
TIPO A



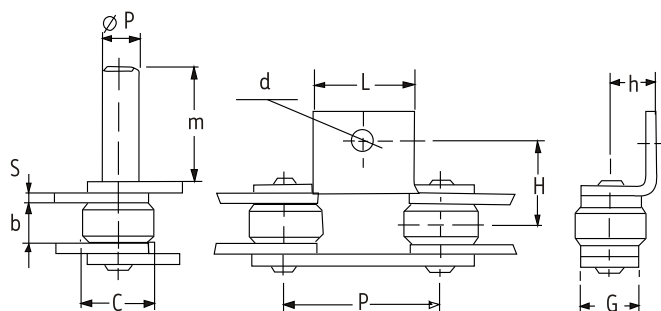
TIPO B



DIN/ISO	P	d1 máx	b1 mín	d2 máx	d3 mín	L máx	Lc máx	h2 máx	t/T máx	Q min.	Q o	q	
	mm.	mm.	mm.	mm.	mm.	mm.	mm.	mm.	mm.	kN	kN	kg/m.	
08BHP	12.700	8.51	7.75	6.55	4.50	16.4	17.6	11.8	1.6/1.3	11.10	12.10	0.56	A
10BHB	15.875	10.16	9.65	5.94	4.04	19.3	20.6	14.7	1.70	17.00	20.8	0.86	A
12BHP	19.050	12.07	11.68	6.50	4.00	21.6	22.8	15.9	1.85	23.60	25.9	1.09	A
60HB	19.050	11.91	12.70	7.00	5.01	25.5	26.6	18.0	2.42	20.00	22.4	1.35	A
16BHBF1	25.400	15.88	12.70	9.53	7.05	30.8	32.2	23.0	4.15/3.1	40.00	45.0	2.28	A
80HP	25.400	15.88	15.75	11.40	8.05	32.5	33.8	24.0	3.25	50.00	52.0	2.26	A
HP35	35.000	20.00	16.00	13.35	10.20	30.4	31.6	26.3	2.50	23.52	26.4	2.02	A
HP50F2	50.000	31.00	15.00	13.20	10.20	36.5	38.0	25.0	4.00	40.00	43.2	3.40	B
HB38.1	38.100	20.00	8.00	8.00	5.30	19.6	20.7	17.3	2.03	25.00	28.8	0.98	B
HB38.1F1	38.100	20.00	18.00	10.50	5.10	39.0	40.3	22.0	4.00	60.00	64.3	2.59	B
HB50.8	50.800	30.00	10.00	11.40	8.20	27.4	28.6	26.0	3.10	50.00	53.6	2.56	B
HB63	63.000	30.00	10.00	11.40	8.10	26.7	28.1	26.5	3.10	50.00	53.6	2.07	B
HB100	100.000	30.00	10.50	11.40	8.20	27.4	28.6	26.0	3.10	50.00	53.6	1.56	B

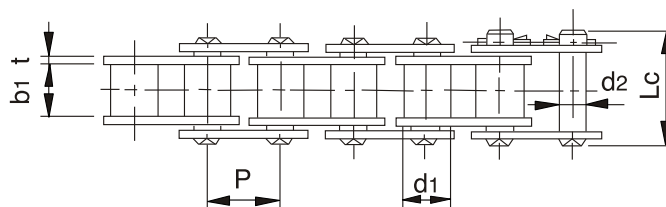
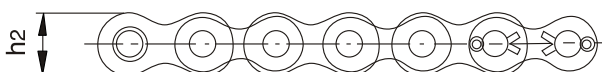


DIN/ISO	P mm.	d ₁ máx mm.	b ₁ mín mm.	d ₂ máx mm.	d ₃ mín mm.	L máx mm.	L _c máx mm.	h ₂ máx mm.	t/T máx mm.	Q mín. kN	Q _o kN	q kg/m.
C2042HP	25.40	15.88	7.85	5.63	4.00	16.5	17.6	12.0	1.50	11.0	12.6	0.78
C2052HP	31.75	19.05	9.53	7.22	5.12	20.5	21.8	15.0	2.03	20.4	22.8	1.25
C2062HP	38.10	22.23	12.70	8.31	6.00	25.8	26.8	17.0	2.42	24.0	27.1	1.72
C2082HP	50.80	28.58	15.75	11.40	8.05	32.4	33.8	24.0	3.25	50.0	55.2	2.82
C2052HPF1	31.75	19.05	9.40	7.03	5.12	20.0	21.5	15.3	1.85	15.0	17.3	1.21
C2042H-HP	25.40	15.88	7.85	5.63	4.00	18.8	19.9	12.0	2.03	11.0	13.2	0.95
C2052H-HP	31.75	19.05	9.53	7.22	5.12	22.1	23.4	15.0	2.42	20.4	23.5	1.44
C2062H-HP	38.10	22.23	12.70	8.31	6.00	29.2	30.2	17.0	3.25	24.0	27.6	1.99
C2082H-HP	50.80	28.58	15.75	11.40	8.05	36.2	37.6	24.0	4.00	50.0	56.5	3.26
HP40	40.00	22.00	8.75	9.00	6.00	23.0	24.2	18.0	2.50	20.0	21.0	1.49
HP50	50.00	31.00	14.50	13.20	10.40	31.1	32.5	25.0	3.10	30.0	34.2	3.29
HP50F4	50.00	31.00	15.00	13.20	10.20	36.5	38.0	25.0	4.00	40.0	44.8	3.73
63HPF1	63.00	40.00	15.00	16.00	12.10	35.0	36.2	28.5	4.00	50.0	56.7	4.20
DH4202HP	50.80	31.80	15.00	14.00	10.10	36.3	39.0	26.0	3.80	42.0	51.6	3.75
DH4203HP	76.20	31.80	15.00	14.00	10.10	36.3	39.0	26.0	3.80	42.0	47.1	3.01
DH42035HP	88.90	31.80	15.00	14.00	10.10	36.3	39.0	26.0	3.80	42.0	51.1	2.79
DH4204HP	101.60	31.80	15.00	14.00	10.10	36.3	39.0	26.0	3.80	42.0	51.6	2.63
DH8403HP	76.20	47.60	19.00	19.05	13.60	43.8	46.3	39.0	5.1/3.8	84.3	130.3	6.81
DH8404HP	101.60	47.60	19.00	19.05	13.60	43.8	46.3	39.0	5.1/3.8	84.3	130.3	5.78
DH8406HP	152.40	47.60	19.00	19.05	13.60	43.8	46.3	39.0	5.1/3.8	84.0	130.3	5.18
HB75	75.00	40.00	22.00	18.00	12.20	42.0	44.0	35.0	4.0	60.0	72.0	5.57
HB76.2	76.20	31.75	15.50	12.70	9.50	35.5	37.0	26.0	4.0	42.0	49.2	3.25
HB80	80.00	50.00	20.00	24.00	18.50	44.5	46.1	40.0	5.0/4.0	79.0	92.5	6.81
HP100	100.00	45.00	22.00	16.00	12.00	46.0	47.5	35.0	5.0	75.0	90.0	6.20
HP100F1	100.00	45.00	22.00	18.00	12.00	47.2	48.5	35.0	5.0	75.0	90.0	6.15



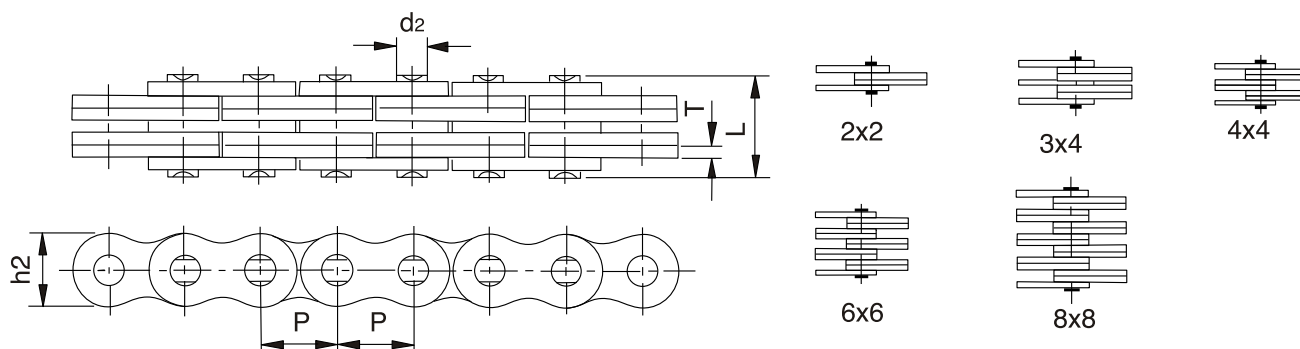
P mm.	B mm.	C mm.	G ANCHO mm.	S GRUESO mm.	H mm.	h mm.	L mm.	d mm.	m mm.	øP mm.	ΔdaN
35.0	14.0	14	18	3.0	25.5	14.0	28	7.0	30	10	3500
35.0	16.0	20	18	2.5	25.5	14.0	28	7.0	30	10	2500
41.3	10.0	25	22	3.0	26.0	20.0	28	8.5	40	12	3500
41.3	16.0	16	22	3.0	29.0	20.0	28	8.5	40	12	3500
41.3	16.0	25	22	3.0	29.0	20.0	28	8.5	40	12	3500
50.8	16.0	25	20	3.0	30.0	16.0	35	7.0	30	10	4000
69.0	12.0	25	19	2.5	25.0	25.5	60	7.0	30	10	3000
69.0	12.5	30	25	3.0	29.5	27.5	60	9.0	40	12	4500
75.0	18.0	30	25	3.0	32.0	19.0	60	9.0	40	12	4500

P mm.	B mm.	C mm.	G ANCHO mm.	S GRUESO mm.	H mm.	h mm.	L mm.	d mm.	m mm.	øP mm.	ΔdaN
35	14	14	18	2.5	22.5	14.0	28	7	30	10	2000
*35	14	22	18	2.5	22.5	14.0	28	7	30	10	2000
*41.3	14	30	25	3.0	35.0	18.0	35	7	40	10	3500
41.3	19	30	25	3.0	37.5	18.0	35	7	40	10	3500

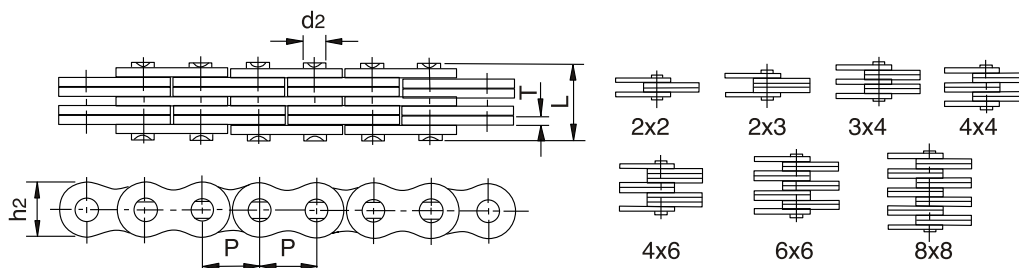


DIN 8164

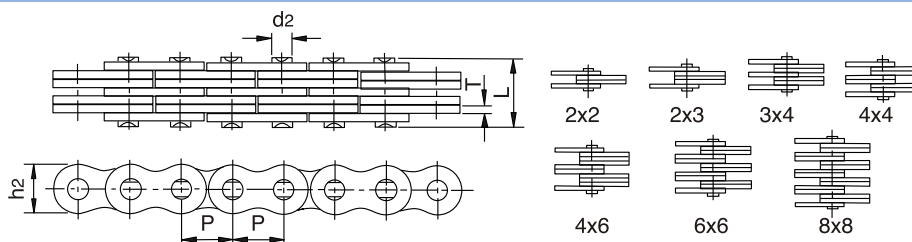
	P	b ₁	d ₁	d ₂	LC	h ₂	t/T			q
	mm.	mm.	mm.	mm.	mm.	mm.	mm.	mm. ²	ΔdaN	kg/m
TM 15	15	14	9	6	32	14	2	111	1800	1.20
TM 20	20	16	12	8	38	19	3	184	3600	2.15
TM 25	25	18	15	10	43	24	3	250	4300	2.55
TM 30	30	20	17	11	49	28	4	319	6500	4.00
TM 35	35	22	18	12	54	30	4	372	8000	4.30
TM 40	40	25	20	14	61	35	5	504	12000	5.50
TM 45	45	30	22	16	70	40	6	688	16000	7.55
TM 50	50	35	26	18	79	44	6	864	18000	9.04
TM 55	55	45	30	20	99	48	8	1260	21000	13.60
TM 60	60	50	32	22	104	54	8	1496	26000	14.90
TM 65	65	55	36	26	113	60	8	1898	30000	18.90
TM 70	70	66.5	42	30	131	66	10	2610	35000	24.70
TM 80	80	70	44	32	150	75	12	3072	55000	31.00
TM 90	90	80	50	36	160	85	12	3816	65000	41.80
TM 100	100	90	56	42	170	95	12	4872	75000	48.04



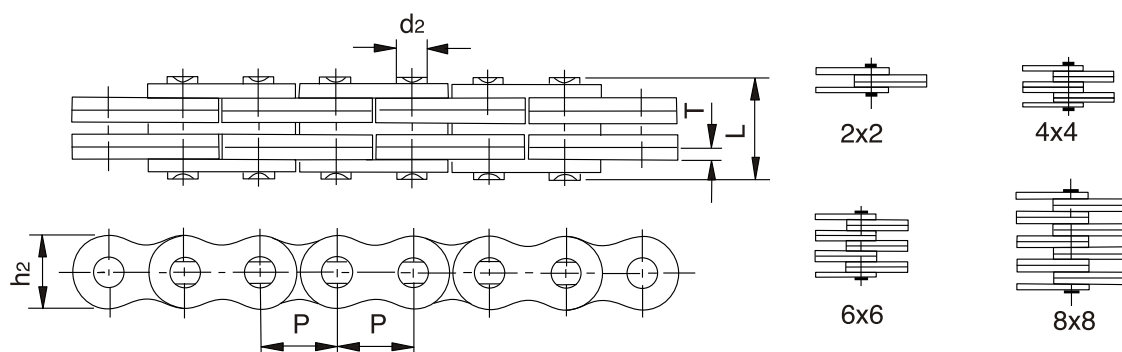
ISO	P mm.		h2 máx mm.	T máx mm.	d2 máx mm.	L máx mm.	Q min. kN	Q ₀ kN	q kg./m.
AL322	9.525	2 x 2	7.7	1.30	3.58	6.80	9.00	10.2	0.23
AL344		4 x 4				11.60	18.0	20.0	0.46
AL422		2 x 2				8.30	14.10	16.9	0.39
AL444	12.700	4 x 4	10.4	1.50	3.96	14.40	28.20	35.2	0.74
AL466		6 x 6				20.50	42.30	52.7	1.13
AL522	15.875	2 x 2	12.8	2.03	5.08	11.05	22.00	27.5	0.64
AL534		3 x 4				17.00	33.00	46.0	1.10
AL544		4 x 4				19.40	44.00	55.0	1.25
AL566		6 x 6				27.50	66.00	82.5	1.79
AL622	19.050	2 x 2	15.6	2.42	5.94	13.00	37.00	44.4	0.86
AL644		4 x 4				22.70	66.70	78.8	1.76
AL666		6 x 6				32.20	100.10	118.6	2.60
AL688		8 x 8				42.20	133.40	156.6	3.49
AL822	25.400	2 x 2	20.5	3.25	7.92	16.00	56.70	68.6	1.54
AL844		4 x 4				29.40	113.40	135.6	3.00
AL866		6 x 6				44.20	170.00	202.3	4.46
AL1022	31.750	2 x 2	25.6	4.00	9.53	19.60	88.50	107.1	2.37
AL1044		4 x 4				36.40	177.00	203.6	4.68
AL1066		6 x 6				52.30	265.00	315.3	7.20
AL1088		8 x 8				68.50	354.00	421.2	9.94
AL1222	38.100	2 x 2	30.5	4.80	11.10	24.30	127.00	151.1	3.65
AL1244		4 x 4				43.80	254.00	299.7	7.05
AL1266		6 x 6				63.20	381.00	426.3	10.50
AL1288		8 x 8				82.60	508.00	568.4	14.03
AL1444	44.450	4 x 4	36.4	5.60	12.64	51.30	372.70	413.6	10.34
AL1466		6 x 6				74.56	559.00	620.4	15.16
AL1644	50.800	4 x 4	41.6	6.40	14.21	58.00	471.00	522.8	12.98
AL1666		6 x 6				83.80	706.00	783.6	19.76
AL1688		8 x 8				109.50	942.0	1045.5	25.47



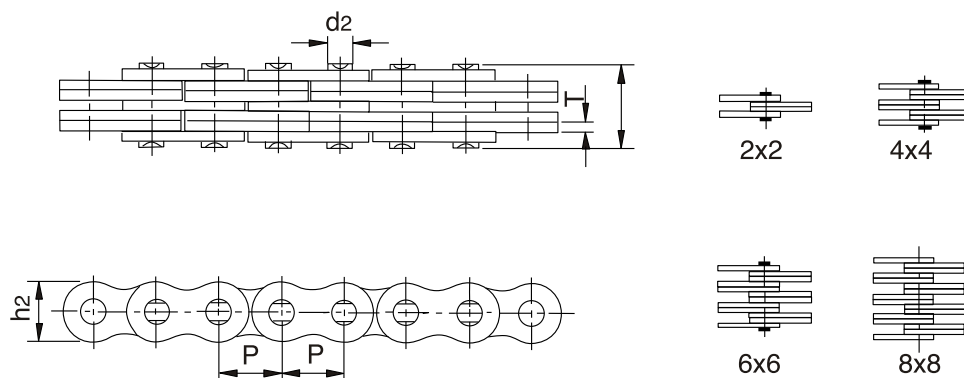
ISO	ANSI	P		h ₂ máx	T	d ₂ máx	L máx	Q min.	Q ₀	q
		mm.		mm.	mm.	mm.	mm.	mm.	Kn	Kn
LH0822	BL422	12.700	2 X 2	12.07	2.08	5.09	11.05	22.2	27.6	0.64
LH0823	BL423		2 X 3				13.16	22.2	27.6	0.80
LH0834	BL434		3 X 4				17.40	33.4	41.4	1.12
LH0844	BL444		4 X 4				19.51	44.5	56.0	1.28
LH0846	BL446		4 X 6				23.75	44.5	56.0	1.60
LH0866	BL466		6 X 6				27.99	66.7	81.7	1.92
LH0888	BL488		8 X 8				36.45	89.0	109.4	2.56
LH1022	BL522	15.875	2 X 2	15.09	2.44	5.96	12.90	33.4	43.1	0.88
LH1023	BL523		2 X 3				15.37	33.4	43.1	1.10
LH1034	BL534		3 X 4				20.32	48.9	65.6	1.50
LH1044	BL544		4 X 4				22.78	66.7	84.5	1.80
LH1046	BL546		4 X 6				27.74	66.7	84.5	2.20
LH1066	BL566		6 X 6				32.69	100.1	125.1	2.65
LH1088	BL588		8 X 8				42.57	133.4	169.5	3.50
LH1222	BL622	19.050	2 X 2	18.11	3.30	7.94	17.37	48.9	63.6	1.45
LH1223	BL623		2 X 3				20.73	48.9	63.6	1.80
LH1234	BL634		3 X 4				27.43	75.6	102.8	2.50
LH1244	BL644		4 X 4				30.78	97.9	120.9	2.90
LH1246	BL646		4 X 6				37.49	97.9	120.9	3.60
LH1266	BL666		6 X 6				44.20	146.8	190.8	4.30
LH1288	BL688		8 X 8				57.61	195.7	238.8	5.80
LH1622	BL822	25.400	2 X 2	24.13	4.09	9.54	21.34	84.5	108.2	2.20
LH1623	BL823		2 X 3				25.48	84.5	108.2	2.70
LH1634	BL834		3 X 4				33.76	129.0	170.0	3.80
LH1644	BL844		4 X 4				37.90	169.0	214.6	4.30
LH1646	BL846		4 X 6				46.18	169.0	214.6	5.40
LH1666	BL866		6 X 6				54.46	253.6	324.5	6.50
LH1668	BL888		8 X 8				71.02	338.1	432.7	8.60



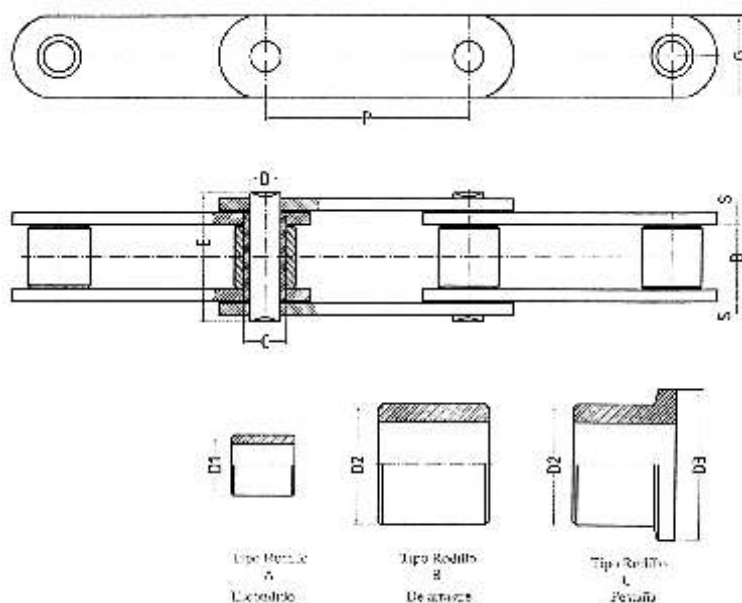
ISO	ANSI	P mm.		h ₂ máx	T máx	d ₂ máx	L máx	Q min.	Q ₀	q
				mm.	mm.	mm.	mm.	Kn	kn/LB	kg/m.
LH2022	BL1022		2 X 2				25.37	115.6	150.8	3.40
LH2023	BL1023		2 X 3				30.33	115.6	150.8	4.30
LH2034	BL1034		3 X 4				40.23	182.4	231.6	6.00
LH2044	BL1044	31.75	4 X 4	30.18	4.90	11.11	45.19	231.3	291.4	6.90
LH2046	BL1046		4 X 6				55.09	231.3	291.4	8.60
LH2066	BL1066		6 X 6				65.00	347.0	430.3	10.30
LH2088	BL1088		8 X 8				84.81	462.6	555.1	13.80
LH2422	BL1222		2 X 2				29.62	151.2	192.0	4.6
LH2423	BL1223		2 X 3				35.43	151.2	192.0	5.8
LH2434	BL1234		3 X 4				47.07	244.6	315.9	8.1
LH2444	BL1244	38.10	4 X 4	36.20	5.77	12.71	52.88	302.5	381.1	9.3
LH2446	BL1246		4 X 6				64.52	302.5	381.1	11.6
LH2466	BL1266		6 X 6				76.15	453.7	543.6	13.9
LH2488	BL1288		8 X 8				99.42	605.0	726.0	18.6
LH2822	BL1422		2 X 2				33.55	191.3	225.7	6.1
LH2823	BL1423		2 X 3				40.16	191.3	225.7	7.6
LH2834	BL1434		3 X 4				53.37	315.8	372.6	10.6
LH2844	BL1444	44.45	4 X 4	42.24	6.55	14.29	59.97	382.6	451.2	12.2
LH2846	BL1446		4 X 6				73.18	382.6	451.2	15.2
LH2866	BL1466		6 X 6				86.39	578.3	682.4	18.2
LH2888	BL1488		8 X 8				112.8	765.1	902.8	24.3
LH3222	BL1622		2 X 2				39.01	289.1	341.1	8.0
LH3223	BL1623		2 X 3				46.58	289.1	341.1	10.0
LH3234	BL1634		3 X 4				61.72	440.4	519.6	14.0
LH3244	BL1644	50.80	4 X 4	48.26	7.52	17.46	69.29	578.3	680.4	16.0
LH3246	BL1646		4 X 6				84.43	578.3	680.4	20.0
LH3266	BL1666		6 X 6				99.57	857.4	1000.7	24.0
LH3288	BL1688		8 X 8				129.84	1156.5	1364.6	32.0
LH4022	BL2022		2 X 2				51.74	433.7	511.7	15.8
LH4023	BL2023		2 X 3				61.70	433.7	511.7	19.8
LH4034	BL2034		3 X 4				81.61	649.4	766.2	27.7
LH4044	BL2044	63.50	4 X 4	60.33	9.91	23.81	91.57	867.4	1023.5	31.6
LH4046	BL2046		4 X 6				111.48	867.4	1023.5	39.5
LH4066	BL2066		6 X 6				131.39	1301.1	1535.2	47.4
LH4088	BL2088		8 X 8				171.22	1734.8	2046.5	63.2



ISO	P mm.		h ₂ máx mm.	T máx mm.	d ₂ máx mm.	L máx mm.	Q min. Kn	Q ₀ kN	q kg./m.
LL0822	12.700	2 X 2	10.60	1.30	4.45	7.6	17.8	20.4	0.35
LL0844		4 X 4				15.6	36.4	40.7	0.84
LL0866		6 X 6				18.2	44.5	50.9	1.00
LL0888		8 X 8				23.6	62.2	71.2	1.33
LL1022	15.875	2 X 2	13.70	1.60	5.08	9.2	22.3	25.5	0.54
LL1044		4 X 4				15.8	44.5	51.0	1.06
LL1066		6 X 6				22.1	66.7	76.3	1.57
LL1088		8 X 8				28.8	89.0	101.9	2.10
LL1222	19.050	2 X 2	16.00	1.85	5.72	10.4	28.9	33.2	0.73
LL1244		4 X 4				17.9	57.8	66.4	1.44
LL1266		6 X 6				25.4	86.7	99.7	2.15
LL1288		8 X 8				32.9	115.6	132.9	2.84

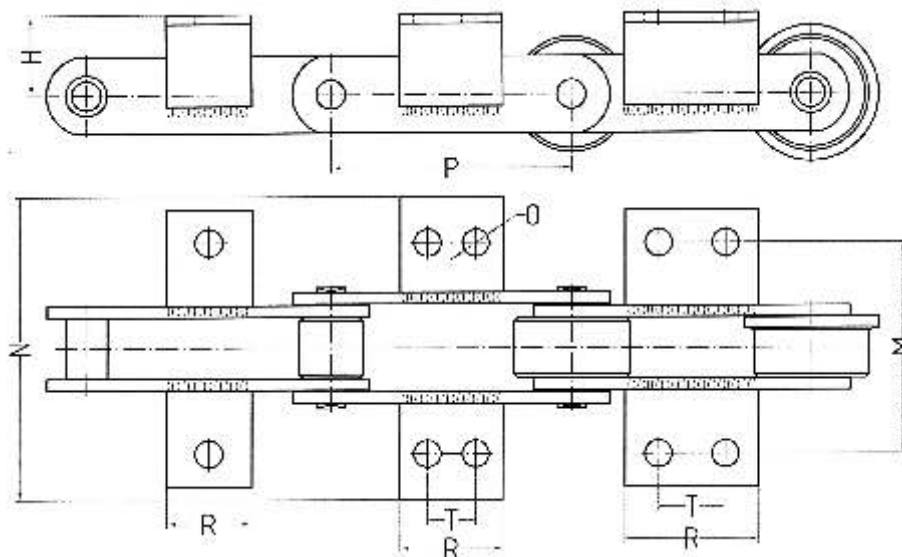


ISO	P mm.		h ₂ máx mm.	T máx mm.	d ₂ máx mm.	L máx mm.	Q min. Kn	Q ₀ Kn	q kg./m.
LL1622	25.400	2 X 2	21.00	3.10	8.28	17.2	58.0	66.7	1.52
LL1644		4 X 4				29.6	116.0	140.0	2.90
LL1666		6 X 6				42.4	174.0	208.8	4.30
LL1688		8 X 8				54.9	232.0	278.0	5.71
LL2022	31.750	2 X 2	26.40	3.70	10.19	20.1	95.0	109.2	2.33
LL2044		4 X 4				33.8	190.0	218.5	4.40
LL2066		6 X 6				50.1	285.0	324.6	6.79
LL2088		8 X 8				64.0	380.0	435.1	8.90
LL2422	38.100	2 X 2	33.40	5.00	14.63	28.4	170.0	195.5	4.47
LL2444		4 X 4				46.3	340.0	380.8	8.22
LL2466		6 X 6				66.4	510.0	571.2	12.22
LL2488		8 X 8				86.6	680.0	775.2	16.30
LL2822	44.450	2 X 2	37.08	6.00	15.90	32.2	200.0	224.0	5.10
LL2844		4 X 4				56.4	400.0	448.0	9.90
LL2866		6 X 6				80.8	600.0	672.0	14.60
LL2888		8 X 8				105.2	800.0	896.0	19.40
LL3222	50.800	2 X 2	42.00	6.00	17.81	33.2	260.0	291.2	5.80
LL3244		4 X 4				56.6	520.0	582.4	12.30
LL3266		6 X 6				80.8	780.0	873.6	18.30
LL3288		8 X 8				105.0	1050.0	1176.0	24.00
LL4022	63.500	2 X 2	52.76	8.25	22.89	44.7	360.0	403.2	10.30
LL4044		4 X 4				77.9	780.0	873.6	20.00
LL4066		6 X 6				111.1	1080.0	1209.6	30.00
LL4088		8 X 8				145.5	1560.0	1747.2	39.10
LL4822	76.200	2 X 2	63.88	10.30	29.24	56.1	560.0	627.2	18.50
LL4844		4 X 4				97.4	1120.0	1554.4	35.70
LL4866		6 X 6				138.9	1168.0	1308.1	53.00
LL4888		8 X 8				182.4	2240.0	2508.8	70.40



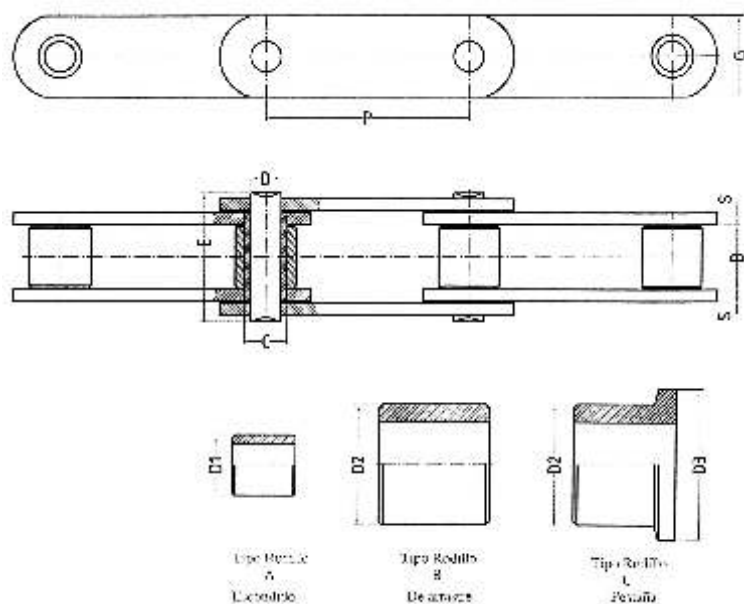
DIN 8167

ISO mm.	P mm.					B mm.	C mm.	D1 mm.	D2 mm.	D3 mm.	e mm.	G mm.	S mm.	D mm.	E mm.	mm. ²	ΔdaN	
	40	50	63	80	100													
M-20	40	50	63	80	100	125	16	9.0	12.5	25	30	3.0	18	2.5	6.0	31	126	2000
M-28	50	63	80	100	125	160	18	10.0	15.0	30	36	3.5	20	3.0	7.0	35	169	2800
M-40	63	80	100	125	160	200	20	12.5	18.0	36	42	4.0	25	3.5	8.5	41	229	4000
M-56	63	80	100	125	160	200	24	15.0	21.0	42	50	4.5	30	4.0	10.0	46	321	5600
M-80	80	100	125	160	200	250	28	18.0	25.0	50	60	5.0	35	5.0	12.0	55	464	8000
M-112	80	100	125	160	200	250	32	21.0	30.0	60	70	6.0	40	6.0	15.0	64	670	11200
M-160	100	125	160	200	250	315	37	25.0	36.0	70	85	7.5	50	7.0	18.0	74	930	16000
M-224	125	160	200	250	315	400	43	30.0	42.0	85	100	9.0	60	8.0	21.0	65	1254	22400
M-315	160	200	250	315	400	500	48	36.0	50.0	100	120	10.0	70	10.0	25.0	100	1730	31500
M-450	200	250	315	400	500	630	56	42.0	60.0	120	142	12.0	80	12.0	30.0	118	2436	45000
M-630	250	315	400	500	630	800	66	50.0	70.0	140	170	14.0	100	14.0	36.0	138	3436	63000
M-900	250	315	400	500	630	800	78	60.0	85.0	170	120	16.0	120	16.0	44.0	160	4905	90000



DIN 8167

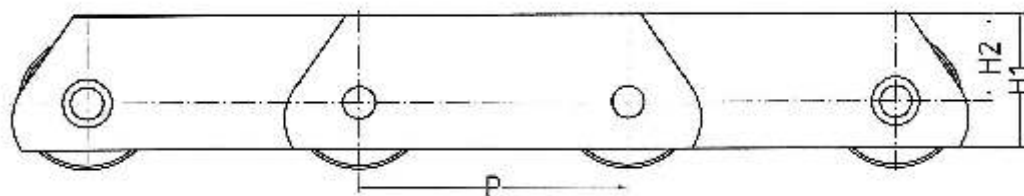
ISO	H	M	N	O	P	R	P	T	R	P	T	R	P	T	R
mm.	mm.	mm.	mm.	mm.	mm.	mm.	mm.	mm.	mm.	mm.	mm.	mm.	mm.	mm.	mm.
M-20	16	54	78	6.6	50	20	63	20	40	80	35	55	100	50	70
M-28	20	64	92	9.0	63	25	80	25	50	100	40	65	125	65	90
M-40	25	70	108	9.0	63	25	80	20	45	100	40	65	125	65	90
M-56	30	88	132	11.0	80	30	100	25	55	125	50	80	160	85	115
M-80	35	96	140	11.0	100	30	125	50	80	160	85	115	200	100	155
M-112	40	110	158	14.0	100	40	125	35	70	160	65	105	200	125	140
M-160	45	124	188	14.0	125	40	160	50	90	200	85	125	250	145	185
M-224	55	140	218	18.0	160	55	200	65	120	250	125	180	315	190	245
M-315	65	160	252	18.0	160	55	200	50	105	250	100	155	315	155	210
M-450	75	180	288	18.0	200	55	250	85	140	315	155	210	400	240	295
M-630	90	230	326	24.0	250	70	315	100	170	400	190	260	500	300	370
M-900	110	280	446	30.0	250	90	315	65	155	400	155	245	500	240	330



DIN 8165

	P	B	D	C	D1	D2	D3	G	S	E	Δ daN
	mm.	mm.	mm.	mm.	mm.	mm.	mm.	mm.	mm.	mm.	
FV-40	40-63 80-100	18	10	15	20	32	40/48	25	3	37	4000
FV-63	40-63 80-100 125-160	22	12	18	26	40	50/60	30	4	46	6000
FV-90	40-63 80-100 126-160 200-250	25	14	20	30	45	63/73	35	5	53	9000
FV-112	100-125 160-200 250	30	16	22	32	55	72/87	40	6	63	11000
FV-140	100-125 160-200 250-315	35	18	26	36	60	80/95	45	6	69	14000
FV-180	125-160 200-250 315-400	45	20	30	42	70	100/120	50	8	86	18000
FV-250	125-160 200-250 315-400	55	25	36	50	80	125/145	60	8	98	25000
FV-315	160-200 250-315 400	65	30	42	60	90	140/170	70	10	117	32000
FV-400	160-200 250-315 400	70	32	44	60	100	150/185	70	12	135	40000
FV-500	160-200 250-315 400	80	36	50	70	110	160/195	80	12	141	50000
FV-630	200-250 315-400	90	42	56	80	120	170/210	100	12	153	60000

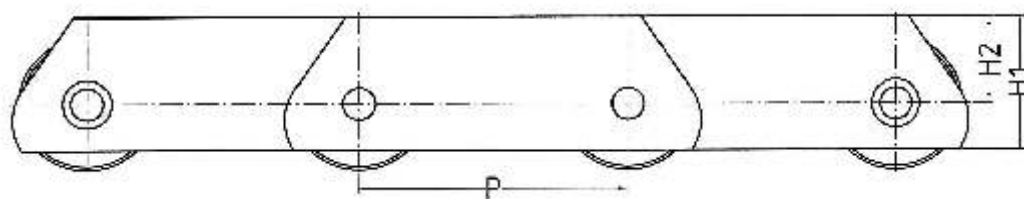
SERIA M



DIN 8167

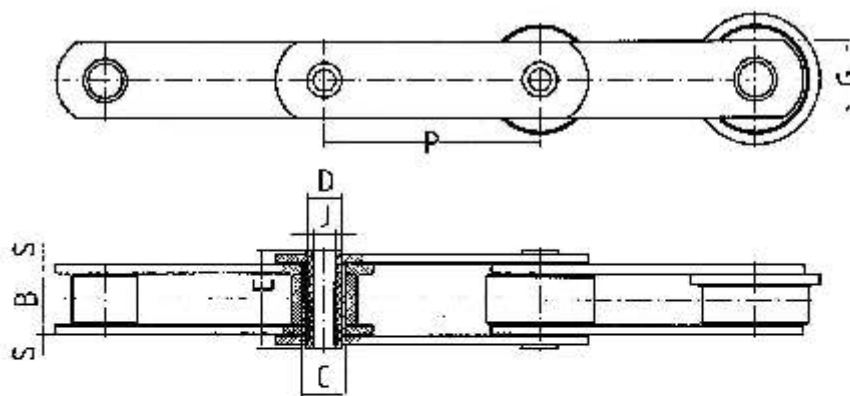
	M20	M28	M40	M56	M80	M112	M160	M224	M315	M450	M630	M900	MC28	MC56	MC112	MC224
	mm.	mm.	mm.	mm.	mm.	mm.	mm.	mm.	mm.	mm.	mm.	mm.	mm.	mm.	mm.	mm.
H1	25	30	35.0	45	50.0	60	70	90	100	120	140	180	35.0	50.0	70	100
H2	16	20	22.5	30	32.5	40	45	60	65	80	90	120	22.5	32.5	45	65

SERIA FV

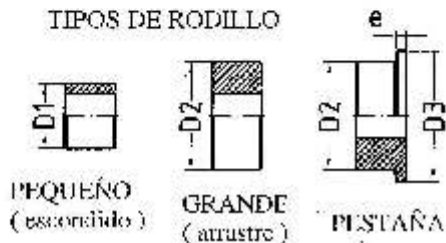


DIN 8167

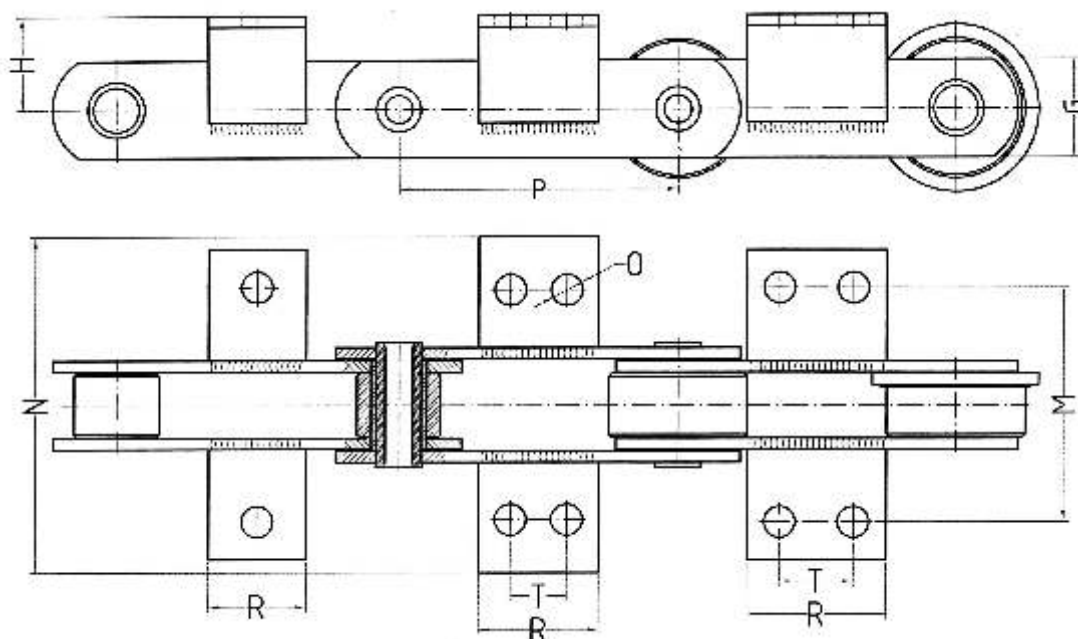
	2104	2106	2109	2111	2114	2118	2125	2132	2140	2150	2160	3106	3114	3125	3160
	mm.	mm.	mm.	mm.	mm.	mm.	mm.	mm.	mm.	mm.	mm.	mm.	mm.	mm.	mm.
H1	35	40	45.0	50	60.0	70	80	90	90	100	120	35.0	50.0	70	100
H2	22	25	27.5	30	37.5	45	50	55	55	60	70	22.1	30.0	45	60



TIPOS DE RODILLO

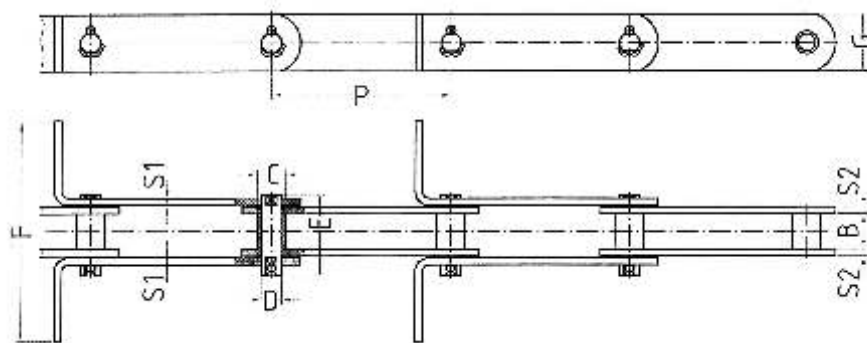


ISO	p***					B	C	D1	D2	D3	e	G	S	D	J	E	mm. ²	ΔdaN
mm.	mm.					mm.	mm.	mm.	mm.	mm.	mm.	mm.	mm.	mm.	mm.	mm.		
MC-28	63	80	100	125	160	20	17.5	25	36	42	4	25	3.5	13.0	8.3	42.0	367	2800
MC-56	80	100	125	160	200	24	21.0	30	50	60	5	35	4.0	15.5	10.3	46.5	500	5600
MC-112	100	125	160	200	250	32	29.0	42	70	88	7	50	6.0	22.0	14.3	64.0	985	11200
MC-224	160	200	250	315	400	43	41.0	60	100	120	10	70	8.0	30.0	20.3	85.0	1848	22400

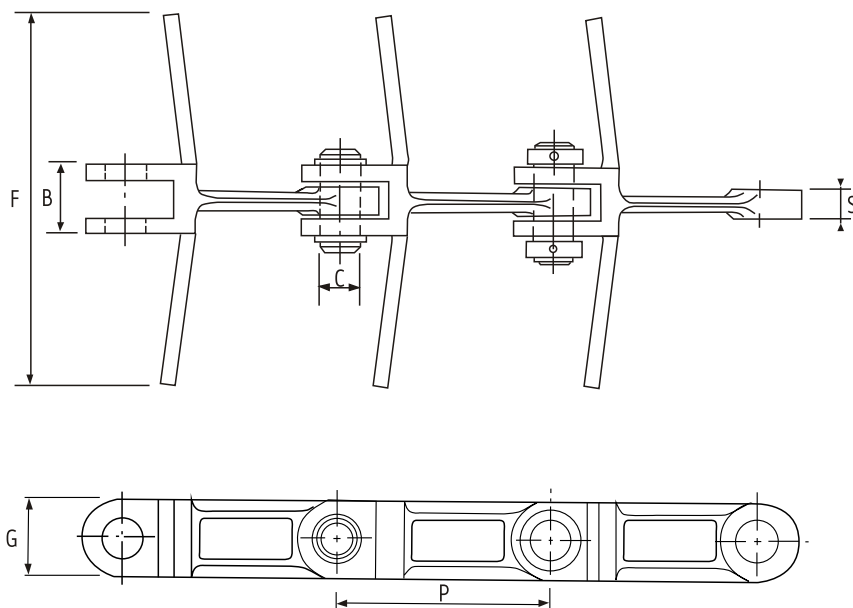


DIN 8169

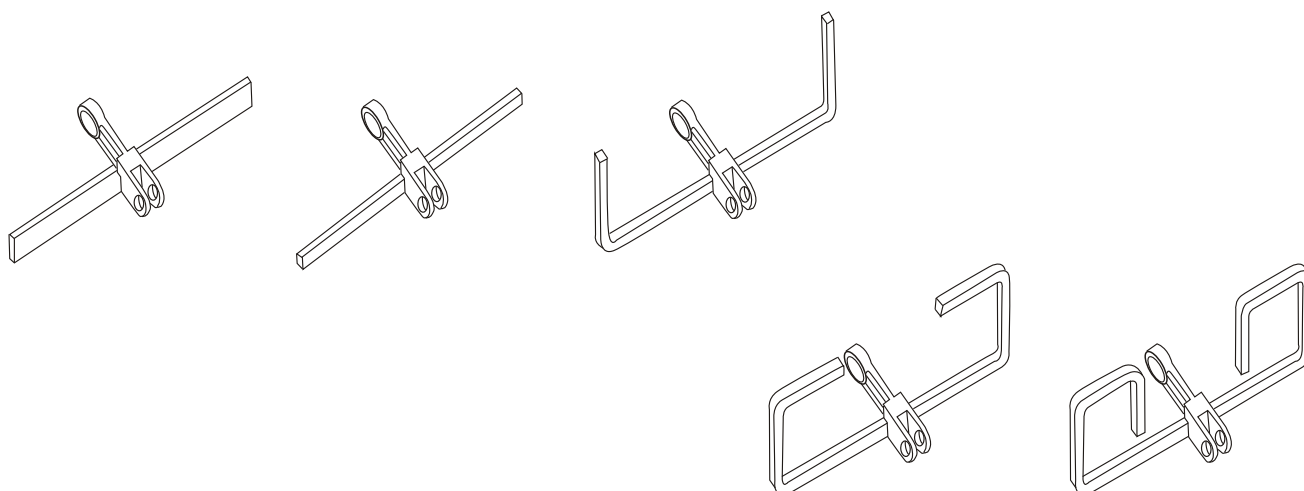
ISO	H	M	N	O	P	R	P	T	R	P	T	R	P	T	R
mm.	mm.	mm.	mm.	mm.	mm.	mm.	mm.	mm.	mm.	mm.	mm.	mm.	mm.	mm.	mm.
MC-28	25	70	108	9	63	25	80	20	45	100	40	65	125	65	90
MC-56	35	88	132	11	100	30	125	50	80	160	85	115	200	125	155
MC-112	45	110	180	14	125	40	160	50	90	200	85	125	250	145	185
MC-224	65	140	220	18	160	55	200	50	105	250	100	155	315	155	210

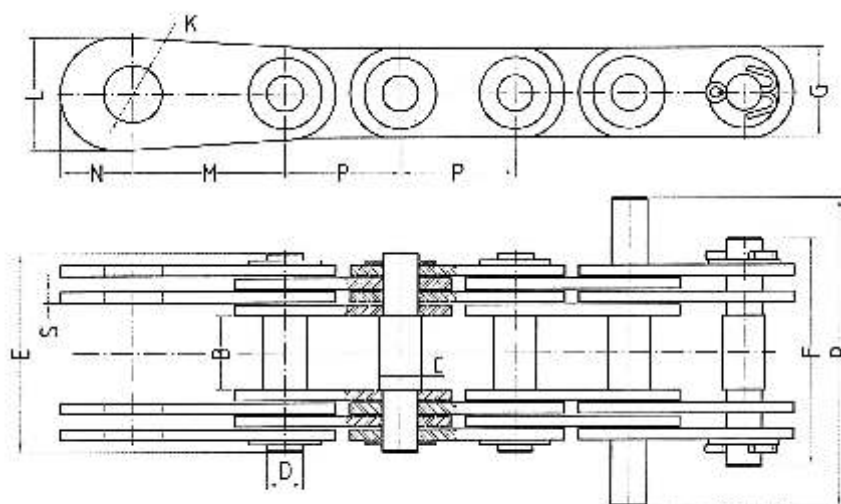


P	B mm.	C mm.	D mm.	E mm.	G Ancho mm.	S1 Espesor mm.	S2 Espesor mm.	F mm.	cm ²	Δ daN
80	18	15	10	36.00	25	3	3	250	2.55	3000
100	18	15	10	36.00	25	3	3	250	2.55	3000
125	18	15	10	36.00	25	3	3	250	2.55	3000
150	18	15	10	36.00	25	3	3	250	2.55	3000
160	18	15	10	36.00	25	3	3	250	2.55	3000
100	20	17	12	42.50	35	4	4	300	3.42	6000
125	20	17	12	42.50	35	4	4	300	3.42	6000
150	20	17	12	42.50	35	4	4	300	3.42	6000
160	20	17	12	42.50	35	4	4	300	3.42	6000
175	20	17	12	42.50	35	4	4	300	3.42	6000
200	20	17	12	42.50	35	4	4	300	3.42	6000
100	25	20	14	52.00	40	5	5	300	4.97	8500
125	25	20	14	52.00	40	5	5	300	4.97	8500
150	25	20	14	52.00	40	5	5	300	4.97	8500
160	25	20	14	52.00	40	5	5	300	4.97	8500
175	25	20	14	52.00	40	5	5	300	4.97	8500
200	25	20	14	52.00	40	5	5	300	4.97	8500
100	30	22	16	60.50	40	6	6	300	6.80	12000
125	30	22	16	60.50	40	6	6	300	6.80	12000
150	30	22	16	60.50	40	6	6	300	6.80	12000
160	30	22	16	60.50	40	6	6	300	6.80	12000
175	30	22	16	60.50	40	6	6	300	6.80	12000
200	30	22	16	60.50	40	6	6	300	6.80	12000
100	35	26	18	68.00	50	6	6	350	8.91	16000
125	35	26	18	68.00	50	6	6	350	8.91	16000
160	35	26	18	68.00	50	6	6	350	8.91	16000
200	35	26	18	68.00	50	6	6	350	8.91	16000
125	45	30	20	83.50	60	6	8	400	12.40	22000
150	45	30	20	83.50	60	6	8	400	12.40	22000
160	45	30	20	83.50	60	6	8	400	12.40	22000
175	45	30	20	83.50	60	6	8	400	12.40	22000
200	45	30	20	83.50	60	6	8	400	12.40	22000
250	45	30	20	83.50	60	6	8	400	12.40	22000
125	50	32	22	94.00	70	8	8	400	15.62	30000
150	50	32	22	94.00	70	8	8	400	15.62	30000
160	50	32	22	94.00	70	8	8	400	15.62	30000
175	50	32	22	94.00	70	8	8	400	15.62	30000
200	50	32	22	94.00	70	8	8	400	15.62	30000
250	50	32	22	94.00	70	8	8	400	15.62	30000



P mm.	G mm.	B mm.	S mm.	C mm.	F mm.	Δ daN
101.6	36	30	13	14	230	19000
142.0	50	42	19	25	430	35000
142.0	50	62	25	25	430	52000
150.0	47	42	19	25	430	30000
160.0	52	50	22	25	430	45000
200.0	60	66	28	30	500	55000
260.0	75	70	32	40	500	76000





P	B	C	D	E	F	R	Por paso	S Grueso	G Ancho	K	L	M	N	mm. ²	△ daN	kg/m
mm.	mm.	mm.	mm.	mm.	mm.	mm.		mm.	mm.	mm.	mm.	mm.	mm.			
10	8	4	3	17	19	-	2	1.5	8	6	16	15	10	9	880	0.40
15	12	5	4	24	26	-	2	2.0	12	9	18	20	11	16	1500	0.70
20	15	8	6	27	32	-	2	2.0	15	10	20	25	12	24	3000	1.10
25	18	10	8	35	41	67	2	3.0	18	12	25	30	15	48	5000	1.75
30	20	11	9	50	57	87	4	3.0	21	14	30	40	18	108	10000	3.40
35	22	12	10	52	60	92	4	3.0	26	16	35	45	21	120	13000	4.50
40	25	14	12	57	65	101	4	3.0	30	18	40	50	24	144	15000	4.70
45	30	17	14	62	69	107	4	3.0	35	22	45	55	27	168	17500	6.40
50	35	22	18	89	96	140	4	4.5	38	26	50	60	30	324	25000	10.60
55	40	24	21	107	114	162	4	6.0	40	32	55	65	33	504	31000	15.50
60	45	26	23	113	119	170	4	6.0	45	36	60	70	36	552	36000	18.00
70	50	32	28	147	156	212	4	6.0	55	40	70	85	42	1008	67000	33.50
80	60	36	32	158	170	232	6	6.0	60	50	85	100	51	1152	70000	38.20
90	70	40	36	183	199	265	6	7.0	70	60	100	120	60	1512	110000	53.00
100	80	45	40	223	238	308	8	7.0	80	70	120	140	72	2296	155000	76.60
110	90	50	45	235	250	326	8	7.0	90	80	140	160	84	2528	175000	90.00
120	100	55	50	260	276	356	8	8.0	100	90	160	180	96	3200	220000	112.00